

Product datasheet for **TA311437**

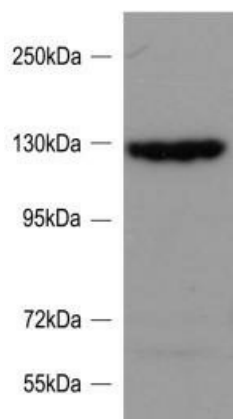
SRGAP2 Goat Polyclonal Antibody

Product data:

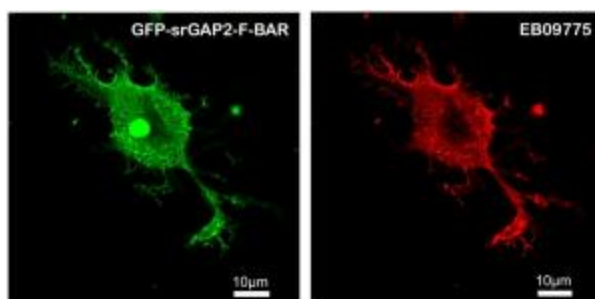
Product Type:	Primary Antibodies
Applications:	IF, WB
Recommended Dilution:	WB: 0.1-0.3ug/ml, IF: 2.5ug/ml
Reactivity:	Human (Expected from sequence similarity: Mouse, Rat, Dog, Cow)
Host:	Goat
Clonality:	Polyclonal
Immunogen:	Peptide with sequence C-KQEDRQTPRSPDST, from the internal region of the protein sequence according to NP_056141.2.
Formulation:	Supplied at 0.5 mg/ml in Tris saline, 0.02% sodium azide, pH7.3 with 0.5% bovine serum albumin. Aliquot and store at -20C. Minimize freezing and thawing.
Concentration:	lot specific
Purification:	Purified from goat serum by ammonium sulphate precipitation followed by antigen affinity chromatography using the immunizing peptide.
Conjugation:	Unconjugated
Storage:	Store at -20°C as received.
Stability:	Stable for 12 months from date of receipt.
Gene Name:	SLIT-ROBO Rho GTPase activating protein 2
Database Link:	NP_056141 Entrez Gene 14270 Mouse Entrez Gene 360840 Rat Entrez Gene 478949 Dog Entrez Gene 23380 Human O75044
Synonyms:	ARHGAP34; FNBP2; SRGAP2A; SRGAP3
Protein Pathways:	Axon guidance



[View online »](#)

Product images:

Data provided by customer: (0.1 ug/ml) staining of Rat Cortical Neuron lysate (35ug protein in RIPA buffer). Primary incubation was 1 hour. Detected by chemiluminescence.



Data provided by customer: HEK293 overexpressing Human srGAP2 and probed with TA311437 at 2.5ug/ml in the right panel.