

Product datasheet for **TA311431**

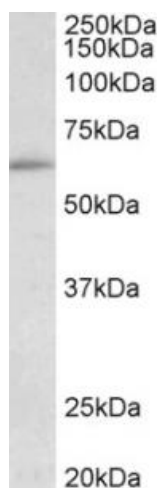
HIC2 Goat Polyclonal Antibody

Product data:

| | |
|-----------------------|--|
| Product Type: | Primary Antibodies |
| Applications: | WB |
| Recommended Dilution: | WB: 0.1-0.3ug/ml |
| Reactivity: | Human (Expected from sequence similarity: Mouse, Rat, Dog, Pig, Cow) |
| Host: | Goat |
| Clonality: | Polyclonal |
| Immunogen: | Peptide with sequence C-PQELPQAKGSDDE, from the internal region of the protein sequence according to NP_055909.2. |
| Formulation: | Supplied at 0.5 mg/ml in Tris saline, 0.02% sodium azide, pH7.3 with 0.5% bovine serum albumin. Aliquot and store at -20C. Minimize freezing and thawing. |
| Concentration: | lot specific |
| Purification: | Purified from goat serum by ammonium sulphate precipitation followed by antigen affinity chromatography using the immunizing peptide. |
| Conjugation: | Unconjugated |
| Storage: | Store at -20°C as received. |
| Stability: | Stable for 12 months from date of receipt. |
| Gene Name: | hypermethylated in cancer 2 |
| Database Link: | NP_055909 Entrez Gene 58180 Mouse Entrez Gene 287940 Rat Entrez Gene 486444 Dog Entrez Gene 23119 Human Q96JB3 |
| Synonyms: | HRG22; ZBTB30; ZNF907 |
| Protein Families: | Transcription Factors |



[View online »](#)

Product images:

(0.1ug/ml) staining of HepG2 lysate (35ug protein in RIPA buffer). Primary incubation was 1 hour. Detected by chemiluminescence.