

Product datasheet for **TA311429**

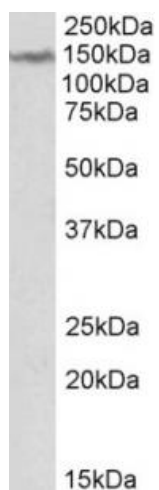
KPI2 (LMTK2) Goat Polyclonal Antibody

Product data:

Product Type:	Primary Antibodies
Applications:	WB
Recommended Dilution:	WB: 1-3ug/ml
Reactivity:	Human (Expected from sequence similarity: Mouse, Rat, Dog)
Host:	Goat
Clonality:	Polyclonal
Immunogen:	Peptide with sequence RCINSESSTD, from the internal region of the protein sequence according to NP_055731.2.
Formulation:	Supplied at 0.5 mg/ml in Tris saline, 0.02% sodium azide, pH7.3 with 0.5% bovine serum albumin. Aliquot and store at -20C. Minimize freezing and thawing.
Concentration:	lot specific
Purification:	Purified from goat serum by ammonium sulphate precipitation followed by antigen affinity chromatography using the immunizing peptide.
Conjugation:	Unconjugated
Storage:	Store at -20°C as received.
Stability:	Stable for 12 months from date of receipt.
Gene Name:	lemur tyrosine kinase 2
Database Link:	NP_055731 Entrez Gene 231876 Mouse Entrez Gene 304286 Rat Entrez Gene 608946 Dog Entrez Gene 22853 Human Q8IWU2
Synonyms:	AATYK2; BREK; cprk; hBREK; KPI-2; KPI2; LMR2; PPP1R100
Protein Families:	Druggable Genome, Protein Kinase, Transmembrane



[View online »](#)

Product images:

(2ug/ml) staining of Human Cerebellum lysate (35ug protein in RIPA buffer). Primary incubation was 1 hour. Detected by chemiluminescence.