

Product datasheet for **TA311425**

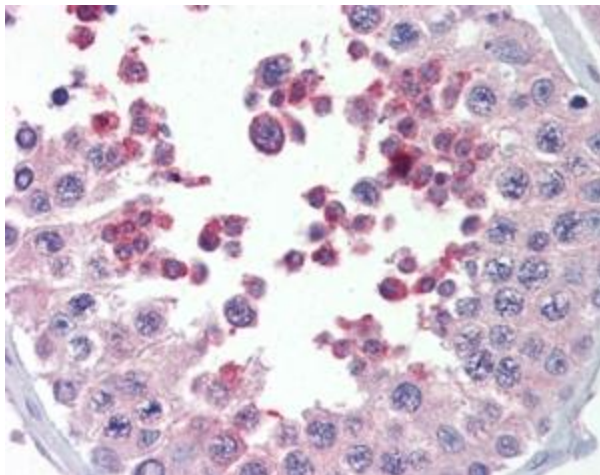
KMT2B Goat Polyclonal Antibody

Product data:

Product Type:	Primary Antibodies
Applications:	IHC
Recommended Dilution:	WB: 1ug/ml, IHC: 5-10ug/ml
Reactivity:	Human (Expected from sequence similarity: Mouse, Rat, Dog, Pig)
Host:	Goat
Clonality:	Polyclonal
Immunogen:	Peptide with sequence CNCGAKRCRRFLN, from the C Terminus of the protein sequence according to NP_055542.1.
Formulation:	Supplied at 0.5 mg/ml in Tris saline, 0.02% sodium azide, pH7.3 with 0.5% bovine serum albumin. Aliquot and store at -20C. Minimize freezing and thawing.
Concentration:	lot specific
Purification:	Purified from goat serum by ammonium sulphate precipitation followed by antigen affinity chromatography using the immunizing peptide.
Conjugation:	Unconjugated
Storage:	Store at -20°C as received.
Stability:	Stable for 12 months from date of receipt.
Gene Name:	lysine methyltransferase 2B
Database Link:	NP_055542 Entrez Gene 75410 Mouse Entrez Gene 102550344 Rat Entrez Gene 100688666 Dog Entrez Gene 9757 Human Q9UMN6
Synonyms:	CXXC10; HRX2; MLL1B; MLL2; MLL4; TRX2; WBP-7; WBP7
Protein Families:	Druggable Genome



[View online »](#)

Product images:

(5ug/ml) staining of paraffin embedded Human Testis. Steamed antigen retrieval with citrate buffer pH 6, AP-staining.