

Product datasheet for **TA311424**

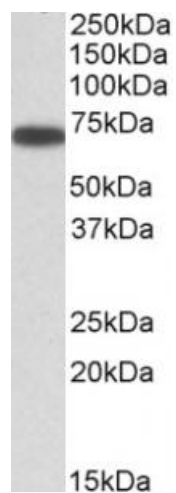
ERO1L (ERO1A) Goat Polyclonal Antibody

Product data:

Product Type:	Primary Antibodies
Applications:	WB
Recommended Dilution:	WB: 0.1-0.3ug/ml
Reactivity:	Human (Expected from sequence similarity: Mouse, Rat, Dog, Pig, Cow)
Host:	Goat
Clonality:	Polyclonal
Immunogen:	Peptide with sequence C-QSDEVPDGIKSASY, from the internal region of the protein sequence according to NP_055399.1.
Formulation:	Supplied at 0.5 mg/ml in Tris saline, 0.02% sodium azide, pH7.3 with 0.5% bovine serum albumin. Aliquot and store at -20C. Minimize freezing and thawing.
Concentration:	lot specific
Purification:	Purified from goat serum by ammonium sulphate precipitation followed by antigen affinity chromatography using the immunizing peptide.
Conjugation:	Unconjugated
Storage:	Store at -20°C as received.
Stability:	Stable for 12 months from date of receipt.
Gene Name:	endoplasmic reticulum oxidoreductase alpha
Database Link:	NP_055399 Entrez Gene 50527 Mouse Entrez Gene 171562 Rat Entrez Gene 490691 Dog Entrez Gene 30001 Human Q96HE7
Synonyms:	ERO1-alpha; ERO1-L; ERO1-L-alpha; Ero1 alpha; ERO1L; ERO1LA
Protein Pathways:	Vibrio cholerae infection



[View online »](#)

Product images:

(0.3ug/ml) staining of A431 lysate (35ug protein in RIPA buffer). Primary incubation was 1 hour. Detected by chemiluminescence.