

## Product datasheet for **TA311420**

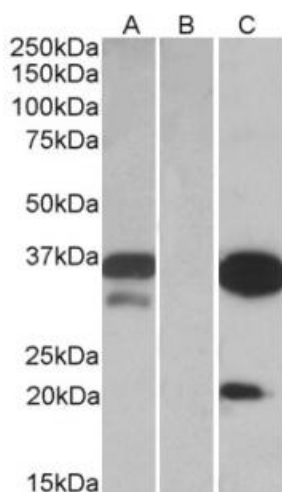
### DAPP1 Goat Polyclonal Antibody

#### Product data:

Product Type:	Primary Antibodies
Applications:	WB
Recommended Dilution:	WB: 0.1-0.3ug/ml
Reactivity:	Human (Expected from sequence similarity: Dog, Cow)
Host:	Goat
Clonality:	Polyclonal
Immunogen:	Peptide with sequence C-KLSQIRKQLNQGE, from the internal region (near C Terminus) of the protein sequence according to NP_055210.2.
Formulation:	Supplied at 0.5 mg/ml in Tris saline, 0.02% sodium azide, pH7.3 with 0.5% bovine serum albumin. Aliquot and store at -20C. Minimize freezing and thawing.
Concentration:	lot specific
Purification:	Purified from goat serum by ammonium sulphate precipitation followed by antigen affinity chromatography using the immunizing peptide.
Conjugation:	Unconjugated
Storage:	Store at -20°C as received.
Stability:	Stable for 12 months from date of receipt.
Gene Name:	dual adaptor of phosphotyrosine and 3-phosphoinositides 1
Database Link:	<a href="#">NP_055210</a> <a href="#">Entrez Gene 478491 Dog</a> <a href="#">Entrez Gene 27071 Human</a> <a href="#">Q9UN19</a>
Synonyms:	BAM32
Protein Families:	Druggable Genome, Phosphatase
Protein Pathways:	B cell receptor signaling pathway



[View online »](#)

**Product images:**

HEK293 lysate (10ug protein in RIPA buffer) over expressing Human DAPP1 with DDK (FLAG) tag probed with TA311420 (0.1ug/ml) in Lane A and probed with anti-DDK tag (1:3000, Cat# [TA50011-100]) in Lane C. Mock-transfected HEK293 probed with TA311420 (1mg/ml) in Lane B. Primary incubations were for 1 hour. Detected by chemiluminescence.