

Product datasheet for **TA311419**

MICS1 (GHITM) Goat Polyclonal Antibody

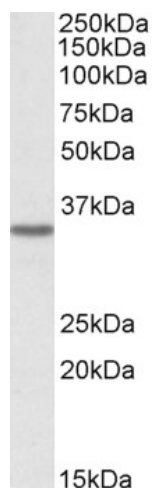
Product data:

Product Type:	Primary Antibodies
Applications:	WB
Recommended Dilution:	WB: 0.01-0.1 µg/ml.
Reactivity:	Human (Expected from sequence similarity: Mouse, Rat, Dog, Cow, Pig)
Host:	Goat
Clonality:	Polyclonal
Immunogen:	Peptide with sequence C-PSREYATKTRIGIR, from the internal region of the protein sequence according to NP_055209.2.
Formulation:	Supplied at 0.5 mg/ml in Tris saline, 0.02% sodium azide, pH7.3 with 0.5% bovine serum albumin. Aliquot and store at -20C. Minimize freezing and thawing.
Concentration:	lot specific
Purification:	Purified from goat serum by ammonium sulphate precipitation followed by antigen affinity chromatography using the immunizing peptide.
Conjugation:	Unconjugated
Storage:	Store at -20°C as received.
Stability:	Stable for 12 months from date of receipt.
Gene Name:	growth hormone inducible transmembrane protein
Database Link:	NP_055209 Entrez Gene 66092 Mouse Entrez Gene 290596 Rat Entrez Gene 479266 Dog Entrez Gene 27069 Human Q9H3K2
Synonyms:	DERP2; HSPC282; MICS1; My021; PTD010; TMBIM5
Protein Families:	Transmembrane

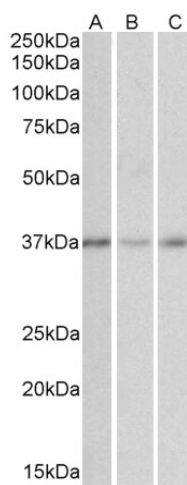


[View online »](#)

Product images:



TA311419 (0.3ug/ml) staining of HeLa cell lysate (35ug protein in RIPA buffer). Primary incubation was 1 hour. Detected by chemiluminescence.



TA311419 (0.01ug/ml) staining of Human Cerebellum (A), Duodenum (B) and Heart (C) cell lysates (35ug protein in RIPA buffer). Primary incubation was 1 hour. Detected by chemiluminescence.