

Product datasheet for **TA311418**

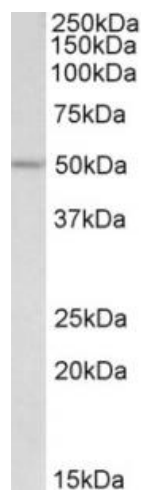
POU2F3 Goat Polyclonal Antibody

Product data:

Product Type:	Primary Antibodies
Applications:	WB
Recommended Dilution:	WB: 1-3ug/ml
Reactivity:	Human (Expected from sequence similarity: Rat, Dog, Cow)
Host:	Goat
Clonality:	Polyclonal
Immunogen:	Peptide with sequence C-EPHLEASQHLPVPKH, from the internal region of the protein sequence according to NP_055167.2.
Formulation:	Supplied at 0.5 mg/ml in Tris saline, 0.02% sodium azide, pH7.3 with 0.5% bovine serum albumin. Aliquot and store at -20C. Minimize freezing and thawing.
Concentration:	lot specific
Purification:	Purified from goat serum by ammonium sulphate precipitation followed by antigen affinity chromatography using the immunizing peptide.
Conjugation:	Unconjugated
Storage:	Store at -20°C as received.
Stability:	Stable for 12 months from date of receipt.
Gene Name:	POU class 2 homeobox 3
Database Link:	NP_055167 Entrez Gene 116544 Rat Entrez Gene 610476 Dog Entrez Gene 25833 Human Q9UKI9
Synonyms:	Epoc-1; OCT-11; OCT11; OTF-11; PLA-1; PLA1; Skn-1a



[View online »](#)

Product images:

(2ug/ml) staining of HEK293 lysate (35ug protein in RIPA buffer). Primary incubation was 1 hour. Detected by chemiluminescence.