

## Product datasheet for **TA311417**

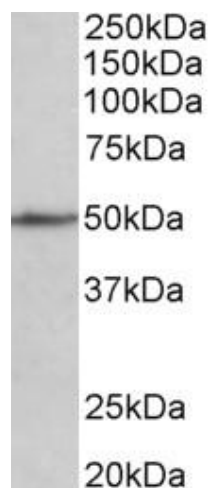
### Cadm1 Goat Polyclonal Antibody

#### Product data:

|                       |  |
|-----------------------|--|
| Product Type:         | Primary Antibodies   |
| Applications:         | WB   |
| Recommended Dilution: | WB: 1-3ug/ml   |
| Reactivity:           | Mouse (Expected from sequence similarity: Human, Rat, Dog, Pig, Cow)   |
| Host:                 | Goat   |
| Clonality:            | Polyclonal   |
| Immunogen:            | Peptide with sequence C-QLYTDPPQESYTT, from the internal region of the protein sequence according to NP_055148.3; NP_001091987.1.  |
| Formulation:          | Supplied at 0.5 mg/ml in Tris saline, 0.02% sodium azide, pH7.3 with 0.5% bovine serum albumin. Aliquot and store at -20C. Minimize freezing and thawing.  |
| Concentration:        | lot specific   |
| Purification:         | Purified from goat serum by ammonium sulphate precipitation followed by antigen affinity chromatography using the immunizing peptide.  |
| Conjugation:          | Unconjugated   |
| Storage:              | Store at -20°C as received.  |
| Stability:            | Stable for 12 months from date of receipt.   |
| Gene Name:            | cell adhesion molecule 1   |
| Database Link:        | <a href="#">NP_997559</a><br><a href="#">Entrez Gene 23705 Human</a> <a href="#">Entrez Gene 363058 Rat</a> <a href="#">Entrez Gene 479432 Dog</a> <a href="#">Entrez Gene 54725 Mouse</a><br><a href="#">Q8R5M8</a> |
| Synonyms:             | BL2; DKFZp686F1789; IGSF4; IGSF4A; MGC51880; MGC149785; Necl-2; NECL2; RA175; sgIGSF; ST17; sTSLC-1; SYNCAM; synCAM1; TSLC-1; TSLC1  |



[View online »](#)

**Product images:**

(1ug/ml) staining of Mouse fetal Heart lysate (35ug protein in RIPA buffer). Primary incubation was 1 hour. Detected by chemiluminescence.