

Product datasheet for **TA311416**

ORC6L (ORC6) Goat Polyclonal Antibody

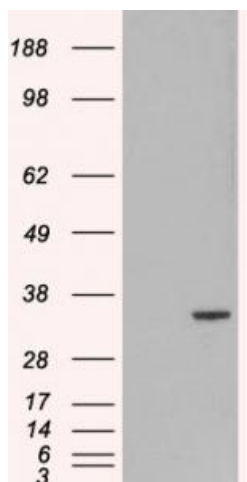
Product data:

Product Type:	Primary Antibodies
Applications:	WB
Recommended Dilution:	WB: 1-3ug/ml
Reactivity:	Human
Host:	Goat
Clonality:	Polyclonal
Immunogen:	Peptide with sequence C-ENAASAQKATAE, from the C Terminus of the protein sequence according to NP_055136.1.
Formulation:	Supplied at 0.5 mg/ml in Tris saline, 0.02% sodium azide, pH7.3 with 0.5% bovine serum albumin. Aliquot and store at -20C. Minimize freezing and thawing.
Concentration:	lot specific
Purification:	Purified from goat serum by ammonium sulphate precipitation followed by antigen affinity chromatography using the immunizing peptide.
Conjugation:	Unconjugated
Storage:	Store at -20°C as received.
Stability:	Stable for 12 months from date of receipt.
Gene Name:	origin recognition complex subunit 6
Database Link:	NP_055136 Entrez Gene 23594 Human Q9Y5N6
Synonyms:	ORC6L
Protein Families:	Druggable Genome, Stem cell - Pluripotency
Protein Pathways:	Cell cycle



[View online »](#)

Product images:



HEK293 overexpressing ORC6L ([RC209054]) and probed with TA311416 (mock transfection in first Lane).