

## Product datasheet for **TA311415**

### **C22orf28 (RTCB) Goat Polyclonal Antibody**

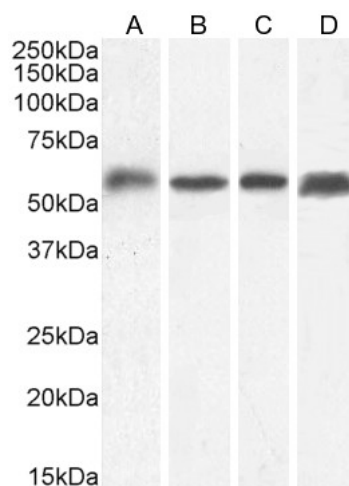
#### **Product data:**

<b>Product Type:</b>	Primary Antibodies
<b>Applications:</b>	FC, IF, IHC, PEP-ELISA, WB
<b>Recommended Dilution:</b>	WB 0.1-0.3ug/ml; IHC 5-10ug/ml
<b>Reactivity:</b>	Human (Expected from sequence similarity: Mouse, Rat, Dog, Pig, Cow)
<b>Host:</b>	Goat
<b>Clonality:</b>	Polyclonal
<b>Immunogen:</b>	Peptide with sequence C-QADPNKVSARAKKR, from the internal region of the protein sequence according to NP_055121.1.
<b>Formulation:</b>	Supplied at 0.5 mg/ml in Tris saline, 0.02% sodium azide, pH7.3 with 0.5% bovine serum albumin. Aliquot and store at -20C. Minimize freezing and thawing.
<b>Concentration:</b>	lot specific
<b>Purification:</b>	Purified from goat serum by ammonium sulphate precipitation followed by antigen affinity chromatography using the immunizing peptide.
<b>Conjugation:</b>	Unconjugated
<b>Storage:</b>	Store at -20°C as received.
<b>Stability:</b>	Stable for 12 months from date of receipt.
<b>Gene Name:</b>	RNA 2',3'-cyclic phosphate and 5'-OH ligase
<b>Database Link:</b>	<a href="#">NP_055121</a> <a href="#">Entrez Gene 28088 Mouse</a> <a href="#">Entrez Gene 362855 Rat</a> <a href="#">Entrez Gene 474524 Dog</a> <a href="#">Entrez Gene 51493 Human</a> <a href="#">Q9Y3I0</a>
<b>Synonyms:</b>	C22orf28; DJ149A16.6; FAAP; HSPC117

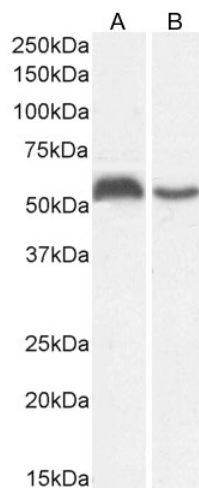


[View online »](#)

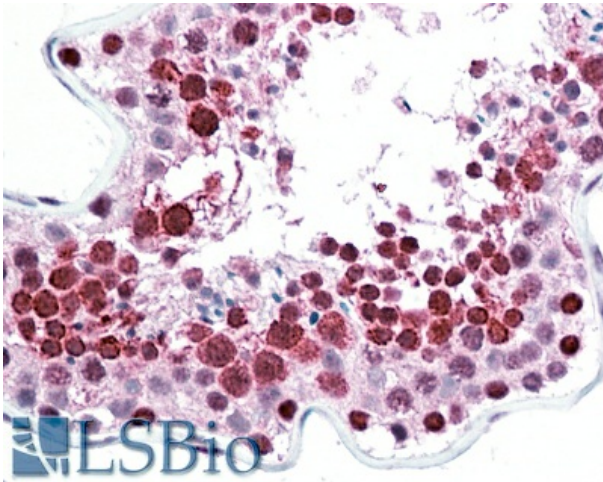
## Product images:



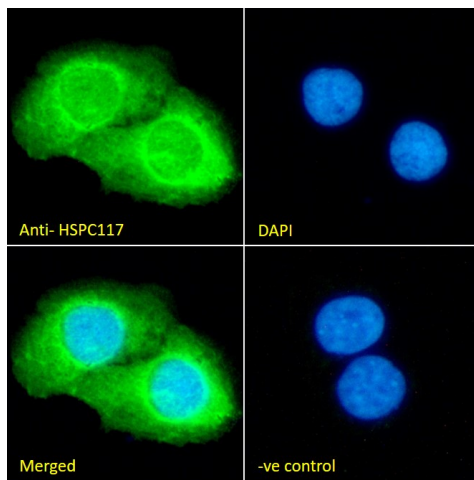
TA311415 (0.01ug/ml) staining of Jurkat (A), HeLa (B), HepG2 (C) and A431 (D) cell lysate (35 $\mu$ g protein in RIPA buffer). Detected by chemiluminescence.



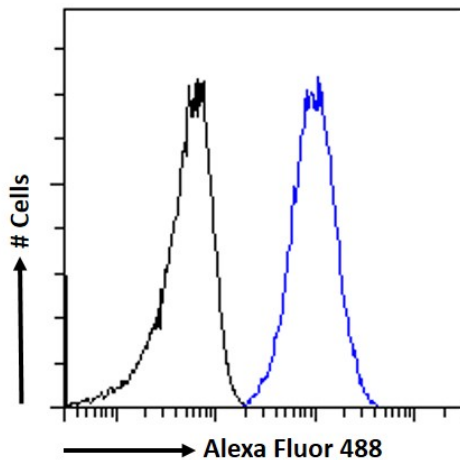
TA311415 (0.03ug/ml) staining of Human Cerebellum (A) and Ovary (B) lysate (35 $\mu$ g protein in RIPA buffer). Detected by chemiluminescence.



EB010954 (5µg/ml) staining of paraffin embedded Human Testis. Steamed antigen retrieval with citrate buffer pH 6, AP-staining.



TA311415 Immunofluorescence analysis of paraformaldehyde fixed A431 cells, permeabilized with 0.15% Triton. Primary incubation 1hr (10ug/ml) followed by Alexa Fluor 488 secondary antibody (2ug/ml), showing cytoplasmic and some nuclear staining. The nuclear stain is DAPI (blue). Negative control: Unimmunized goat IgG (10ug/ml) followed by Alexa Fluor 488 secondary antibody (2ug/ml).



TA311415 Flow cytometric analysis of paraformaldehyde fixed A431 cells (blue line), permeabilized with 0.5% Triton. Primary incubation 1hr (10ug/ml) followed by Alexa Fluor 488 secondary antibody (1ug/ml). IgG control: Unimmunized goat IgG (black line) followed by Alexa Fluor 488 secondary antibody.