

## Product datasheet for **TA311413**

### PPP2R1A Goat Polyclonal Antibody

#### Product data:

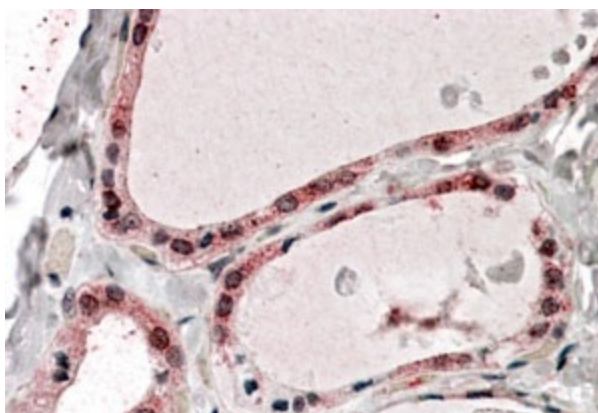
Product Type:	Primary Antibodies
Applications:	IHC, WB
Recommended Dilution:	WB: 0.03-0.1ug/ml, IHC: 3-6ug/mL
Reactivity:	Human, Mouse, Rat (Expected from sequence similarity: Dog, Pig, Cow)
Host:	Goat
Clonality:	Polyclonal
Immunogen:	Peptide with sequence C-KYFAQEALTVLSLA, from the C Terminus of the protein sequence according to NP_055040.2.
Formulation:	Supplied at 0.5 mg/ml in Tris saline, 0.02% sodium azide, pH7.3 with 0.5% bovine serum albumin. Aliquot and store at -20C. Minimize freezing and thawing.
Concentration:	lot specific
Purification:	Purified from goat serum by ammonium sulphate precipitation followed by antigen affinity chromatography using the immunizing peptide.
Conjugation:	Unconjugated
Storage:	Store at -20°C as received.
Stability:	Stable for 12 months from date of receipt.
Gene Name:	protein phosphatase 2 scaffold subunit Aalpha
Database Link:	<a href="#">NP_055040</a> <a href="#">Entrez Gene 51792 Mouse</a> <a href="#">Entrez Gene 117281 Rat</a> <a href="#">Entrez Gene 484335 Dog</a> <a href="#">Entrez Gene 5518 Human</a> <a href="#">P30153</a>
Synonyms:	PP2A-Aalpha; PP2AAALPHA; PR65A
Protein Families:	Druggable Genome, Phosphatase, Transcription Factors
Protein Pathways:	Long-term depression, Oocyte meiosis, TGF-beta signaling pathway, Tight junction, Wnt signaling pathway



[View online »](#)

**Product images:**

(0.03ug/ml) staining of Human Lymph Node lysate (35ug protein in RIPA buffer). Primary incubation was 1 hour. Detected by chemiluminescence.



Anti-PPP2R1A Antibody (3.8ug/ml) staining of paraffin embedded Human Thyroid Gland. Steamed antigen retrieval with citrate buffer pH 6, AP-staining.