

Product datasheet for **TA311412**

Setd2 Goat Polyclonal Antibody

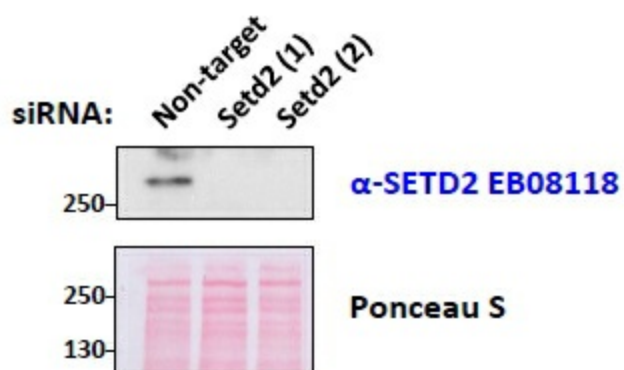
Product data:

Product Type:	Primary Antibodies
Applications:	WB
Recommended Dilution:	WB: 0.5-2 µg/ml.
Reactivity:	Mouse (Expected from sequence similarity: Human, Dog, Pig)
Host:	Goat
Clonality:	Polyclonal
Immunogen:	Peptide with sequence C-ERDPDKQTQNKE, from the internal region of the protein sequence according to NP_054878.3.
Formulation:	Supplied at 0.5 mg/ml in Tris saline, 0.02% sodium azide, pH7.3 with 0.5% bovine serum albumin. Aliquot and store at -20C. Minimize freezing and thawing.
Concentration:	lot specific
Purification:	Purified from goat serum by ammonium sulphate precipitation followed by antigen affinity chromatography using the immunizing peptide.
Conjugation:	Unconjugated
Storage:	Store at -20°C as received.
Stability:	Stable for 12 months from date of receipt.
Gene Name:	SET domain containing 2
Database Link:	NP_001074809 Entrez Gene 29072 Human Entrez Gene 476643 Dog Entrez Gene 235626 Mouse E9Q5F9
Synonyms:	FLJ16420; FLJ22472; FLJ23184; FLJ45883; FLJ46217; HBP231; HIF-1; HIF1; hSET2; HSPC069; HYPB; KIAA1732; KMT3A; p231HBP; SET2



[View online »](#)

Product images:



TA311412 (0.5 ug/ml) staining of mouse fibroblast lysates transiently expressing different siRNA in second and third lane (35 ug protein in RIPA buffer). Primary incubation was 1 hour. Detected by chemiluminescence.