

## Product datasheet for **TA311410**

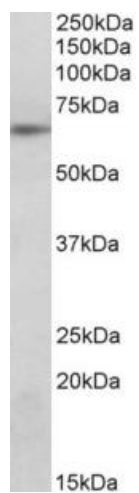
### SOCS5 Goat Polyclonal Antibody

#### Product data:

|                       |  |
|-----------------------|--|
| Product Type:         | Primary Antibodies   |
| Applications:         | WB   |
| Recommended Dilution: | WB: 0.3-1ug/ml   |
| Reactivity:           | Human (Expected from sequence similarity: Mouse, Rat, Pig, Cow)  |
| Host:                 | Goat   |
| Clonality:            | Polyclonal   |
| Immunogen:            | Peptide with sequence DKVGKMWNNFK-C, from the N Terminus of the protein sequence according to NP_054730.1.   |
| Formulation:          | Supplied at 0.5 mg/ml in Tris saline, 0.02% sodium azide, pH7.3 with 0.5% bovine serum albumin. Aliquot and store at -20C. Minimize freezing and thawing.                    |
| Concentration:        | lot specific   |
| Purification:         | Purified from goat serum by ammonium sulphate precipitation followed by antigen affinity chromatography using the immunizing peptide.  |
| Conjugation:          | Unconjugated   |
| Storage:              | Store at -20°C as received.  |
| Stability:            | Stable for 12 months from date of receipt.   |
| Gene Name:            | suppressor of cytokine signaling 5   |
| Database Link:        | <a href="#">NP_054730</a><br><a href="#">Entrez Gene 56468 Mouse</a> <a href="#">Entrez Gene 500616 Rat</a> <a href="#">Entrez Gene 9655 Human</a><br><a href="#">O75159</a> |
| Synonyms:             | CIS6; Cish5; CISH6; SOCS-5   |
| Protein Families:     | Druggable Genome   |
| Protein Pathways:     | Jak-STAT signaling pathway   |



[View online »](#)

**Product images:**

(0.3ug/ml) staining of Molt4 lysate (35ug protein in RIPA buffer). Primary incubation was 1 hour. Detected by chemiluminescence.