

Product datasheet for **TA311408**

RMC1 Goat Polyclonal Antibody

Product data:

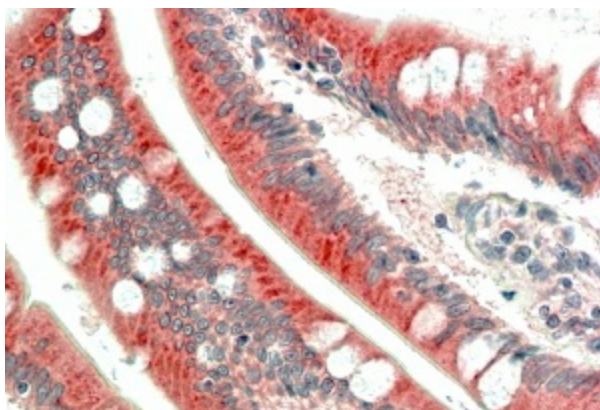
Product Type:	Primary Antibodies
Applications:	IHC, WB
Recommended Dilution:	ELISA: 1:32,000. WB: 1-3ug/ml. IHC: 5-10ug/ml
Reactivity:	Human (Expected from sequence similarity: Mouse, Rat, Dog)
Host:	Goat
Clonality:	Polyclonal
Immunogen:	Peptide with sequence C-DKLNHEYKKYLDAEQ, from the internal region of the protein sequence according to NP_037458.3.
Formulation:	Supplied at 0.5 mg/ml in Tris saline, 0.02% sodium azide, pH7.3 with 0.5% bovine serum albumin. Aliquot and store at -20C. Minimize freezing and thawing.
Concentration:	lot specific
Purification:	Purified from goat serum by ammonium sulphate precipitation followed by antigen affinity chromatography using the immunizing peptide.
Conjugation:	Unconjugated
Storage:	Store at -20°C as received.
Stability:	Stable for 12 months from date of receipt.
Gene Name:	chromosome 18 open reading frame 8
Database Link:	NP_037458 Entrez Gene 291784 Rat Entrez Gene 606951 Dog Entrez Gene 29919 Human Q96DM3
Synonyms:	HsT2591; Mic-1; MIC1



[View online »](#)

Product images:

(1ug/ml) staining of Human Breast lysate (35ug protein in RIPA buffer). Primary incubation was 1 hour. Detected by chemiluminescence.



TA311408 (5ug/ml) staining of paraffin embedded Human Small Intestine. Steamed antigen retrieval with citrate buffer pH 6, AP-staining.