

Product datasheet for **TA311407**

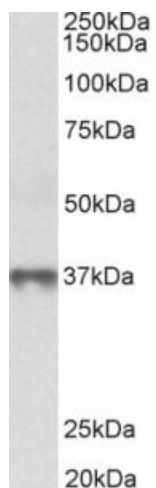
MAT2B Goat Polyclonal Antibody

Product data:

Product Type:	Primary Antibodies
Applications:	WB
Recommended Dilution:	WB: 0.3-1ug/ml
Reactivity:	Human (Expected from sequence similarity: Mouse, Rat, Dog, Pig, Cow)
Host:	Goat
Clonality:	Polyclonal
Immunogen:	Peptide with sequence REKELSIHFVPGS-C, from the N Terminus of the protein sequence according to NP_037415.1.
Formulation:	Supplied at 0.5 mg/ml in Tris saline, 0.02% sodium azide, pH7.3 with 0.5% bovine serum albumin. Aliquot and store at -20C. Minimize freezing and thawing.
Concentration:	lot specific
Purification:	Purified from goat serum by ammonium sulphate precipitation followed by antigen affinity chromatography using the immunizing peptide.
Conjugation:	Unconjugated
Storage:	Store at -20°C as received.
Stability:	Stable for 12 months from date of receipt.
Gene Name:	methionine adenosyltransferase 2B
Database Link:	NP_037415 Entrez Gene 108645 Mouse Entrez Gene 683630 Rat Entrez Gene 479301 Dog Entrez Gene 27430 Human Q9NZL9
Synonyms:	MAT-II; MATIIBeta; Nbla02999; SDR23E1; TGR
Protein Pathways:	Cysteine and methionine metabolism, Metabolic pathways, Selenoamino acid metabolism



[View online »](#)

Product images:

(0.3ug/ml) staining of Human Thymus lysate (35ug protein in RIPA buffer). Primary incubation was 1 hour. Detected by chemiluminescence.