

Product datasheet for **TA311405**

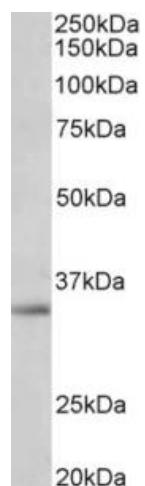
SPON2 Goat Polyclonal Antibody

Product data:

Product Type:	Primary Antibodies
Applications:	WB
Recommended Dilution:	WB: 1-3ug/ml
Reactivity:	Human (Expected from sequence similarity: Mouse, Rat, Dog)
Host:	Goat
Clonality:	Polyclonal
Immunogen:	Peptide with sequence C-RTRYVRVQPANNNGSP, from the internal region (near C Terminus) of the protein sequence according to NP_036577.1.
Formulation:	Supplied at 0.5 mg/ml in Tris saline, 0.02% sodium azide, pH7.3 with 0.5% bovine serum albumin. Aliquot and store at -20C. Minimize freezing and thawing.
Concentration:	lot specific
Purification:	Purified from goat serum by ammonium sulphate precipitation followed by antigen affinity chromatography using the immunizing peptide.
Conjugation:	Unconjugated
Storage:	Store at -20°C as received.
Stability:	Stable for 12 months from date of receipt.
Gene Name:	spondin 2
Database Link:	NP_036577 Entrez Gene 100689 Mouse Entrez Gene 171569 Rat Entrez Gene 102155429 Dog Entrez Gene 10417 Human Q9BUD6
Synonyms:	DIL-1; DIL1; M-SPONDIN; MINDIN
Protein Families:	Secreted Protein



[View online »](#)

Product images:

(1ug/ml) staining of A549 lysate (35ug protein in RIPA buffer). Primary incubation was 1 hour. Detected by chemiluminescence.