

Product datasheet for **TA311402**

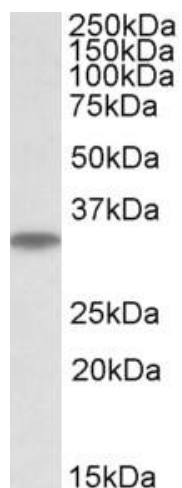
EB3 (MAPRE3) Goat Polyclonal Antibody

Product data:

Product Type:	Primary Antibodies
Applications:	WB
Recommended Dilution:	WB: 0.05-0.2ug/ml
Reactivity:	Human, Mouse (Expected from sequence similarity: Dog, Cow)
Host:	Goat
Clonality:	Polyclonal
Immunogen:	Peptide with sequence C-KLIGTAVPQRTSPT, from the internal region of the protein sequence according to NP_036458.2.
Formulation:	Supplied at 0.5 mg/ml in Tris saline, 0.02% sodium azide, pH7.3 with 0.5% bovine serum albumin. Aliquot and store at -20C. Minimize freezing and thawing.
Concentration:	lot specific
Purification:	Purified from goat serum by ammonium sulphate precipitation followed by antigen affinity chromatography using the immunizing peptide.
Conjugation:	Unconjugated
Storage:	Store at -20°C as received.
Stability:	Stable for 12 months from date of receipt.
Gene Name:	microtubule associated protein RP/EB family member 3
Database Link:	NP_036458 Entrez Gene 100732 Mouse Entrez Gene 475694 Dog Entrez Gene 22924 Human Q9UPY8
Synonyms:	EB3; EBF3; EBF3-S; RP3



[View online »](#)

Product images:

(0.05ug/ml) staining of Mouse Brain lysate (35ug protein in RIPA buffer). Primary incubation was 1 hour. Detected by chemiluminescence.