

Product datasheet for **TA311400**

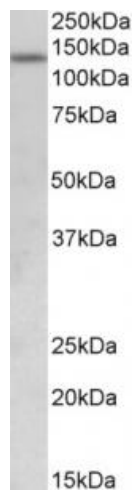
FBXL11 (KDM2A) Goat Polyclonal Antibody

Product data:

Product Type:	Primary Antibodies
Applications:	WB
Recommended Dilution:	WB: 0.5-2ug/ml
Reactivity:	Human (Expected from sequence similarity: Mouse, Rat, Dog, Pig, Cow)
Host:	Goat
Clonality:	Polyclonal
Immunogen:	Peptide with sequence C-PRKDRQVHLTHFELE, from the internal region of the protein sequence according to NP_036440.1.
Formulation:	Supplied at 0.5 mg/ml in Tris saline, 0.02% sodium azide, pH7.3 with 0.5% bovine serum albumin. Aliquot and store at -20C. Minimize freezing and thawing.
Concentration:	lot specific
Purification:	Purified from goat serum by ammonium sulphate precipitation followed by antigen affinity chromatography using the immunizing peptide.
Conjugation:	Unconjugated
Storage:	Store at -20°C as received.
Stability:	Stable for 12 months from date of receipt.
Gene Name:	lysine demethylase 2A
Database Link:	NP_036440 Entrez Gene 225876 Mouse Entrez Gene 361700 Rat Entrez Gene 483702 Dog Entrez Gene 22992 Human Q9Y2K7
Synonyms:	CXXC8; FBL7; FBL11; FBXL11; JHDM1A; LILINA
Protein Families:	Druggable Genome, Transcription Factors



[View online »](#)

Product images:

(0.5ug/ml) staining of Human Uterus lysate (35ug protein in RIPA buffer). Primary incubation was 1 hour. Detected by chemiluminescence.