

Product datasheet for **TA311390**

Prol1 Goat Polyclonal Antibody

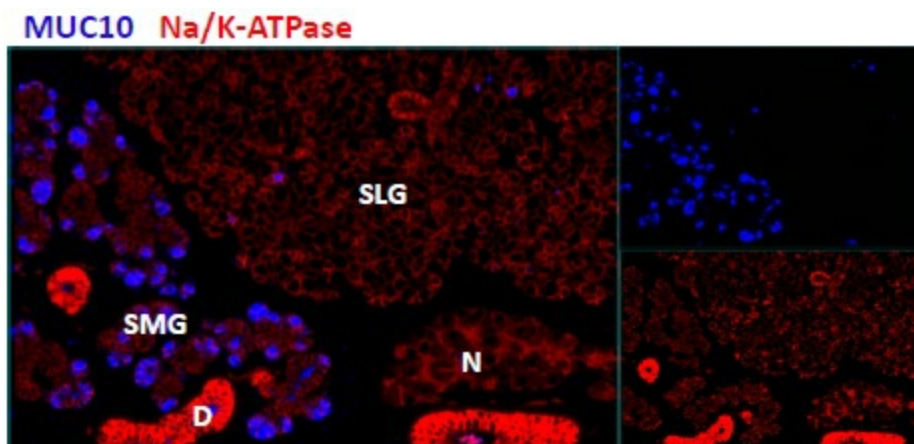
Product data:

Product Type:	Primary Antibodies
Applications:	IF, IHC, IP, PEP-ELISA, WB
Recommended Dilution:	WB: 1ug/ml, IHC: 3ug/ml
Reactivity:	Mouse
Host:	Goat
Clonality:	Polyclonal
Immunogen:	Peptide with sequence C-QFPVRKYLEDPY, from the internal region of the protein sequence according to NP_032670.2.
Formulation:	Supplied at 0.5 mg/ml in Tris saline, 0.02% sodium azide, pH7.3 with 0.5% bovine serum albumin. Aliquot and store at -20C. Minimize freezing and thawing.
Concentration:	lot specific
Purification:	Purified from goat serum by ammonium sulphate precipitation followed by antigen affinity chromatography using the immunizing peptide.
Conjugation:	Unconjugated
Storage:	Store at -20°C as received.
Stability:	Stable for 12 months from date of receipt.
Gene Name:	proline rich, lacrimal 1
Database Link:	NP_032670 Entrez Gene 17830 Mouse
Synonyms:	BPLP; PRL1



[View online »](#)

Product images:



TA311390 (2.9ug/ml) staining of cells in the submandibular salivary gland (SMG), but not in the sublingual salivary gland (SLG) in mouse.