

## Product datasheet for **TA311389**

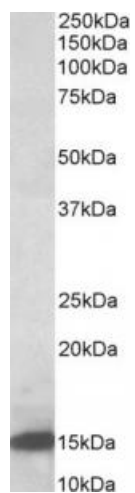
### Lgals1 Goat Polyclonal Antibody

#### Product data:

Product Type:	Primary Antibodies
Applications:	WB
Recommended Dilution:	WB: 0.5-2ug/ml
Reactivity:	Rat (Expected from sequence similarity: Human, Mouse, Cow)
Host:	Goat
Clonality:	Polyclonal
Immunogen:	Peptide with sequence C-KLPDGHEFKFPNR, from the internal region of the protein sequence according to NP_032521.1.
Formulation:	Supplied at 0.5 mg/ml in Tris saline, 0.02% sodium azide, pH7.3 with 0.5% bovine serum albumin. Aliquot and store at -20C. Minimize freezing and thawing.
Concentration:	lot specific
Purification:	Purified from goat serum by ammonium sulphate precipitation followed by antigen affinity chromatography using the immunizing peptide.
Conjugation:	Unconjugated
Storage:	Store at -20°C as received.
Stability:	Stable for 12 months from date of receipt.
Gene Name:	lectin, galactoside-binding, soluble, 1
Database Link:	<a href="#">NP_063969</a> <a href="#">Entrez Gene 3956 Human</a> <a href="#">Entrez Gene 16852 Mouse</a> <a href="#">Entrez Gene 56646 Rat</a> <a href="#">P11762</a>
Synonyms:	DKFZp686E23103; GAL1; galaptin; galectin-1; GBP; HBL; HPL



[View online »](#)

**Product images:**

(0.5ug/ml) staining of Rat Pancreas lysate (35ug protein in RIPA buffer). Primary incubation was 1 hour. Detected by chemiluminescence.