

Product datasheet for **TA311379**

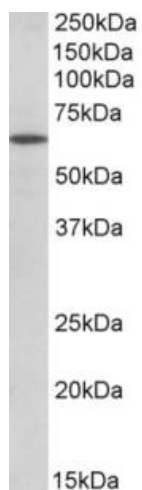
Pou6f2 Goat Polyclonal Antibody

Product data:

Product Type:	Primary Antibodies
Applications:	WB
Recommended Dilution:	WB: 0.3-1ug/ml
Reactivity:	Mouse (Expected from sequence similarity: Human, Rat, Cow)
Host:	Goat
Clonality:	Polyclonal
Immunogen:	Peptide with sequence RSEMNAELRGEDK-C, from the N Terminus of the protein sequence according to NP_009183.3; NP_001159490.1.
Formulation:	Supplied at 0.5 mg/ml in Tris saline, 0.02% sodium azide, pH7.3 with 0.5% bovine serum albumin. Aliquot and store at -20C. Minimize freezing and thawing.
Concentration:	lot specific
Purification:	Purified from goat serum by ammonium sulphate precipitation followed by antigen affinity chromatography using the immunizing peptide.
Conjugation:	Unconjugated
Storage:	Store at -20°C as received.
Stability:	Stable for 12 months from date of receipt.
Gene Name:	POU domain, class 6, transcription factor 2
Database Link:	NP_778171 Entrez Gene 11281 Human Entrez Gene 681092 Rat Entrez Gene 218030 Mouse Q8BJI4
Synonyms:	RPF-1; RPF1; WT5; WTSL



[View online »](#)

Product images:

(0.3ug/ml) staining of Mouse Eye lysate (35ug protein in RIPA buffer). Primary incubation was 1 hour. Detected by chemiluminescence.