

Product datasheet for **TA311376**

ZIC2 Goat Polyclonal Antibody

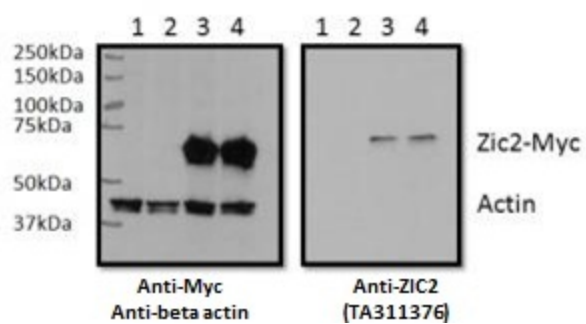
Product data:

Product Type:	Primary Antibodies
Applications:	WB
Recommended Dilution:	WB: 0.5-2ug/ml
Reactivity:	Human (Expected from sequence similarity: Mouse, Rat, Dog, Cow)
Host:	Goat
Clonality:	Polyclonal
Immunogen:	Peptide with sequence C-HSGLSSNFNEWY, from the C Terminus of the protein sequence according to NP_009060.2.
Formulation:	Supplied at 0.5 mg/ml in Tris saline, 0.02% sodium azide, pH7.3 with 0.5% bovine serum albumin. Aliquot and store at -20C. Minimize freezing and thawing.
Concentration:	lot specific
Purification:	Purified from goat serum by ammonium sulphate precipitation followed by antigen affinity chromatography using the immunizing peptide.
Conjugation:	Unconjugated
Storage:	Store at -20°C as received.
Stability:	Stable for 12 months from date of receipt.
Gene Name:	Zic family member 2
Database Link:	NP_009060 Entrez Gene 22772 Mouse Entrez Gene 361096 Rat Entrez Gene 485533 Dog Entrez Gene 7546 Human O95409
Synonyms:	HPE5
Protein Families:	Druggable Genome
Protein Pathways:	Hedgehog signaling pathway



[View online »](#)

Product images:



RWPE1 lysate (60ug protein in RIPA buffer) overexpressing Human ZIC2 with C-terminal MYC tag probed with TA311376 (0.5ug/ml) in the right panel and probed with anti-MYC Tag (1:1000) and anti-beta-Actin in the left panel. Mock-transfected RWPE1 in Lanes 1 and expressing GFP in Lanes 2. Primary incubations were overnight at 4C. Detected by chemiluminescence.