

## Product datasheet for **TA311374**

### Tubulin Polymerization Promoting Protein (TPPP) Goat Polyclonal Antibody

#### Product data:

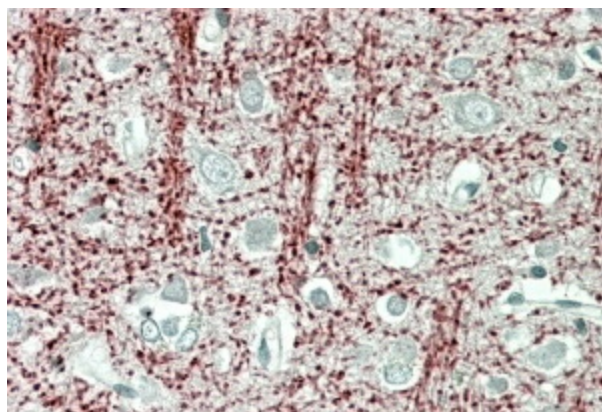
Product Type:	Primary Antibodies
Applications:	IHC, WB
Recommended Dilution:	WB: 0.001-0.01ug/ml; IHC: 3-5ug/ml; ELISA: 1:32,000
Reactivity:	Human, Mouse, Rat (Expected from sequence similarity: Pig)
Host:	Goat
Clonality:	Polyclonal
Immunogen:	Peptide with sequence C-DPSKDRAAKRLSLES, from the internal region of the protein sequence according to NP_008961.1.
Formulation:	Supplied at 0.5 mg/ml in Tris saline, 0.02% sodium azide, pH7.3 with 0.5% bovine serum albumin. Aliquot and store at -20C. Minimize freezing and thawing.
Concentration:	lot specific
Purification:	Purified from goat serum by ammonium sulphate precipitation followed by antigen affinity chromatography using the immunizing peptide.
Conjugation:	Unconjugated
Storage:	Store at -20°C as received.
Stability:	Stable for 12 months from date of receipt.
Gene Name:	tubulin polymerization promoting protein
Database Link:	<a href="#">NP_008961</a> <a href="#">Entrez Gene 72948 Mouse</a> <a href="#">Entrez Gene 361466 Rat</a> <a href="#">Entrez Gene 11076 Human</a> <a href="#">O94811</a>
Synonyms:	p24; p25; p25alpha; TPPP; TPPP1



[View online »](#)

**Product images:**

(0.001ug/ml) staining of Human Cerebellum lysate (35ug protein in RIPA buffer). Primary incubation was 1 hour. Detected by chemiluminescence.



TA311374 (3.8ug/ml) staining of paraffin embedded Human Cerebral Cortex. Steamed antigen retrieval with citrate buffer pH 6, AP-staining.