

Product datasheet for **TA311372**

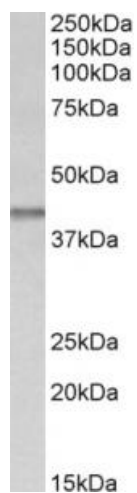
Idh3b Goat Polyclonal Antibody

Product data:

Product Type:	Primary Antibodies
Applications:	WB
Recommended Dilution:	WB: 0.03-0.1ug/ml
Reactivity:	Mouse (Expected from sequence similarity: Human, Rat, Dog, Pig, Cow)
Host:	Goat
Clonality:	Polyclonal
Immunogen:	Peptide with sequence C-TTDFIKSVIGHLQTK, from the C Terminus of the protein sequence according to NP_008830.2; NP_777281.1.
Formulation:	Supplied at 0.5 mg/ml in Tris saline, 0.02% sodium azide, pH7.3 with 0.5% bovine serum albumin. Aliquot and store at -20C. Minimize freezing and thawing.
Concentration:	lot specific
Purification:	Purified from goat serum by ammonium sulphate precipitation followed by antigen affinity chromatography using the immunizing peptide.
Conjugation:	Unconjugated
Storage:	Store at -20°C as received.
Stability:	Stable for 12 months from date of receipt.
Gene Name:	isocitrate dehydrogenase 3 (NAD+) beta
Database Link:	NP_570954 Entrez Gene 3420 Human Entrez Gene 94173 Rat Entrez Gene 477177 Dog Entrez Gene 170718 Mouse
Synonyms:	FLJ11043; H-IDHB; MGC903; RP46



[View online »](#)

Product images:

(0.03ug/ml) staining of Mouse fetal Kidney lysate (35ug protein in RIPA buffer). Primary incubation was 1 hour. Detected by chemiluminescence.