

Product datasheet for **TA311371**

Morf4l1 Goat Polyclonal Antibody

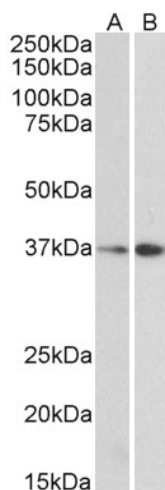
Product data:

Product Type:	Primary Antibodies
Applications:	IHC, PEP-ELISA, WB
Recommended Dilution:	WB: 0.1-0.3ug/ml ELISA:1:128000
Reactivity:	Mouse (Expected from sequence similarity: Human, Rat, Pig, Cow)
Host:	Goat
Clonality:	Polyclonal
Immunogen:	Peptide with sequence APKQDPKPKFQEG-C, from the N Terminus of the protein sequence according to NP_006782.1; NP_996670.1.
Formulation:	Supplied at 0.5 mg/ml in Tris saline, 0.02% sodium azide, pH7.3 with 0.5% bovine serum albumin. Aliquot and store at -20C. Minimize freezing and thawing.
Concentration:	lot specific
Purification:	Purified from goat serum by ammonium sulphate precipitation followed by antigen affinity chromatography using the immunizing peptide.
Conjugation:	Unconjugated
Storage:	Store at -20°C as received.
Stability:	Stable for 12 months from date of receipt.
Gene Name:	mortality factor 4 like 1
Database Link:	NP_077751 Entrez Gene 10933 Human Entrez Gene 300891 Rat Entrez Gene 21761 Mouse P60762
Synonyms:	Eaf3; FWP006; HsT17725; MEAF3; MGC10631; MORFRG15; MRG15; S863-6

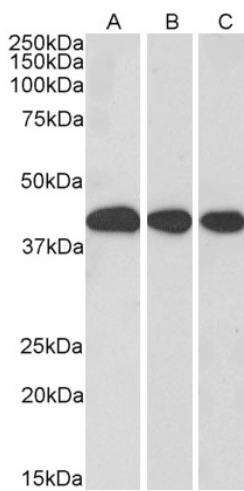


[View online »](#)

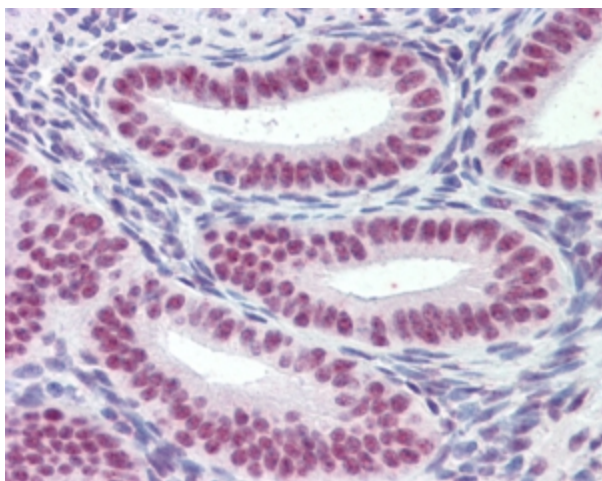
Product images:



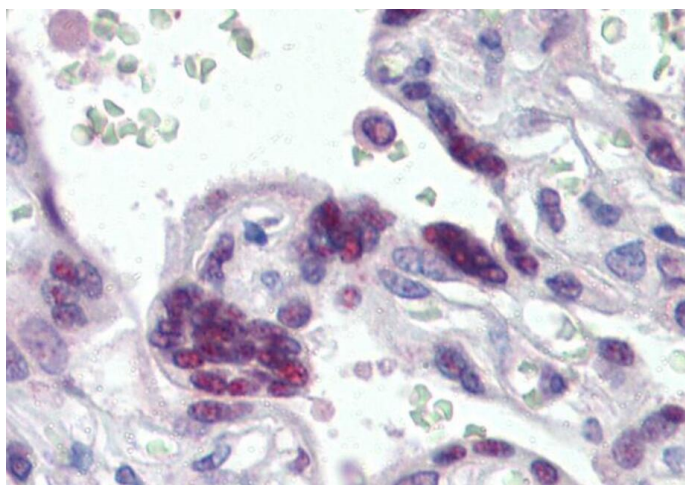
TA311371 (0.3ug/ml) staining of NIH3T3 (A) and HepG2 (B) lysate (35ug protein in RIPA buffer). Primary incubation was 1 hour. Detected by chemiluminescence



TA311371 (0.3ug/ml) staining of Mouse Liver (A), Rat Liver (B) and Pig Liver (C) lysate (35ug protein in RIPA buffer). Primary incubation was 1 hour. Detected by chemiluminescence



TA311371 (2.5ug/ml) staining of paraffin embedded Human Uterus. Steamed antigen retrieval with citrate buffer pH 6, AP-staining. This data was obtained using a previous batch.



TA311371 (2.5ug/ml) staining of paraffin embedded Human Placenta. Steamed antigen retrieval with citrate buffer pH 6, AP-staining. This data was obtained using a previous batch.