

## Product datasheet for **TA311367**

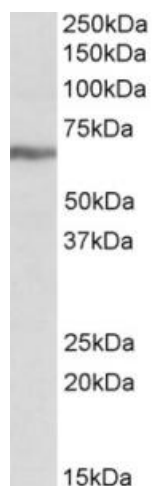
### IGF2BP1 Goat Polyclonal Antibody

#### Product data:

Product Type:	Primary Antibodies
Applications:	WB
Recommended Dilution:	WB: 0.3-1ug/ml
Reactivity:	Human (Expected from sequence similarity: Mouse, Rat, Dog, Cow)
Host:	Goat
Clonality:	Polyclonal
Immunogen:	Peptide with sequence C-EKVFAEHKISYSGQ, from the Internal region of the protein sequence according to NP_006537.3; NP_001153895.1.
Formulation:	Supplied at 0.5 mg/ml in Tris saline, 0.02% sodium azide, pH7.3 with 0.5% bovine serum albumin. Aliquot and store at -20C. Minimize freezing and thawing.
Concentration:	lot specific
Purification:	Purified from goat serum by ammonium sulphate precipitation followed by antigen affinity chromatography using the immunizing peptide.
Conjugation:	Unconjugated
Storage:	Store at -20°C as received.
Stability:	Stable for 12 months from date of receipt.
Gene Name:	insulin like growth factor 2 mRNA binding protein 1
Database Link:	<a href="#">NP_006537</a> <a href="#">Entrez Gene 140486 Mouse</a> <a href="#">Entrez Gene 303477 Rat</a> <a href="#">Entrez Gene 491064 Dog</a> <a href="#">Entrez Gene 10642 Human</a> <a href="#">Q9NZI8</a>
Synonyms:	CRD-BP; CRDBP; IMP-1; IMP1; VICKZ1; ZBP1



[View online »](#)

**Product images:**


(0.3ug/ml) staining of K562 lysate (35ug protein in RIPA buffer). Primary incubation was 1 hour. Detected by chemiluminescence.