

Product datasheet for **TA311366**

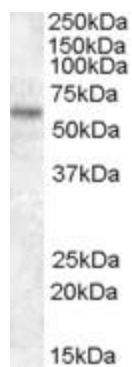
TFE3 Goat Polyclonal Antibody

Product data:

| | |
|-----------------------|------------------------------------------------------------------------------------------------------------------------------------------------------------|
| Product Type: | Primary Antibodies |
| Applications: | WB |
| Recommended Dilution: | WB: 1-3ug/ml |
| Reactivity: | Human (Expected from sequence similarity: Mouse, Dog, Cow) |
| Host: | Goat |
| Clonality: | Polyclonal |
| Immunogen: | Peptide with sequence SHAAEPARDGVEAS-C, from the N Terminus of the protein sequence according to NP_006512.2. |
| Formulation: | Supplied at 0.5 mg/ml in Tris saline, 0.02% sodium azide, pH7.3 with 0.5% bovine serum albumin. Aliquot and store at -20C. Minimize freezing and thawing. |
| Concentration: | lot specific |
| Purification: | Purified from goat serum by ammonium sulphate precipitation followed by antigen affinity chromatography using the immunizing peptide. |
| Conjugation: | Unconjugated |
| Storage: | Store at -20°C as received. |
| Stability: | Stable for 12 months from date of receipt. |
| Gene Name: | transcription factor binding to IGHM enhancer 3 |
| Database Link: | NP_006512 Entrez Gene 209446 Mouse Entrez Gene 491872 Dog Entrez Gene 7030 Human P19532 |
| Synonyms: | bHLHe33; RCCP2; RCCX1; TFEA |
| Protein Families: | Druggable Genome, Transcription Factors |



[View online »](#)

Product images:

(1ug/ml) staining of HEK293 lysate (35ug protein in RIPA buffer). Primary incubation was 1 hour. Detected by chemiluminescence.