

Product datasheet for **TA311362**

ARPC1A Goat Polyclonal Antibody

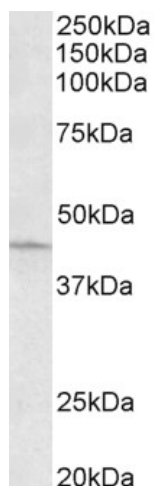
Product data:

Product Type:	Primary Antibodies
Applications:	WB
Recommended Dilution:	WB: 0.1-0.3 µg/ml.
Reactivity:	Human (Expected from sequence similarity: Mouse, Rat, Pig, Cow)
Host:	Goat
Clonality:	Polyclonal
Immunogen:	Peptide with sequence C-DFKTLESSIQGLR, from the C Terminus of the protein sequence according to NP_006400.2; NP_001177925.1.
Formulation:	Supplied at 0.5 mg/ml in Tris saline, 0.02% sodium azide, pH7.3 with 0.5% bovine serum albumin. Aliquot and store at -20C. Minimize freezing and thawing.
Concentration:	lot specific
Purification:	Purified from goat serum by ammonium sulphate precipitation followed by antigen affinity chromatography using the immunizing peptide.
Conjugation:	Unconjugated
Storage:	Store at -20°C as received.
Stability:	Stable for 12 months from date of receipt.
Gene Name:	actin related protein 2/3 complex subunit 1A
Database Link:	NP_006400 Entrez Gene 56443 Mouse Entrez Gene 81824 Rat Entrez Gene 10552 Human Q92747
Synonyms:	Arc40; HEL-68; HEL-S-307; SOP2Hs; SOP2L
Protein Pathways:	Fc gamma R-mediated phagocytosis, Pathogenic Escherichia coli infection, Regulation of actin cytoskeleton

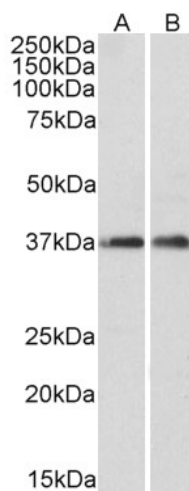


[View online »](#)

Product images:



TA311362 (0.3 ug/ml) staining of HeLa lysate (35 ug protein in RIPA buffer). Primary incubation was 1 hour. Detected by chemiluminescence.



TA311362 (0.1 ug/ml) staining of fetal Mouse Brain (A) and adult Rat Brain (B) lysates (35 ug protein in RIPA buffer). Primary incubation was 1 hour. Detected by chemiluminescence.