

Product datasheet for **TA311361**

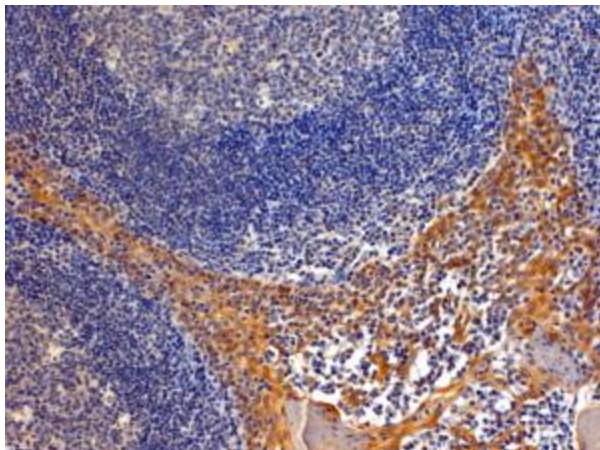
Importin 8 (IPO8) Goat Polyclonal Antibody

Product data:

Product Type:	Primary Antibodies
Applications:	IHC
Recommended Dilution:	WB: 1ug/ml, IHC: 4-6ug/ml
Reactivity:	Human (Expected from sequence similarity: Dog, Pig, Cow)
Host:	Goat
Clonality:	Polyclonal
Immunogen:	Peptide with sequence C-SAFNFGTVPSNN, from the C Terminus of the protein sequence according to NP_006381.2; NP_001177924.1.
Formulation:	Supplied at 0.5 mg/ml in Tris saline, 0.02% sodium azide, pH7.3 with 0.5% bovine serum albumin. Aliquot and store at -20C. Minimize freezing and thawing.
Concentration:	lot specific
Purification:	Purified from goat serum by ammonium sulphate precipitation followed by antigen affinity chromatography using the immunizing peptide.
Conjugation:	Unconjugated
Storage:	Store at -20°C as received.
Stability:	Stable for 12 months from date of receipt.
Gene Name:	importin 8
Database Link:	NP_006381 Entrez Gene 612863 Dog Entrez Gene 10526 Human O15397
Synonyms:	RANBP8



[View online »](#)

Product images:

(4ug/ml) staining of paraffin embedded Human Tonsil. Steamed antigen retrieval with Tris/EDTA buffer pH 9, HRP-staining. Similar results were obtained after antigen retrieval at pH9.