

Product datasheet for **TA311358**

AMPK alpha 2 (PRKAA2) Goat Polyclonal Antibody

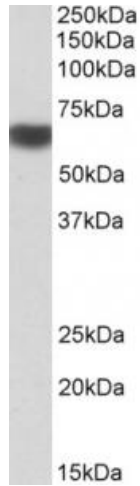
Product data:

Product Type:	Primary Antibodies
Applications:	ELISA, WB
Recommended Dilution:	WB: 1-3ug/ml, ELISA: 1.5-3ug/ml
Reactivity:	Human, Mouse, Rat (Expected from sequence similarity: Dog, Pig, Cow)
Host:	Goat
Clonality:	Polyclonal
Immunogen:	Peptide with sequence CPLDALNTTKP, from the internal region of the protein sequence according to NP_006243.2.
Formulation:	Supplied at 0.5 mg/ml in Tris saline, 0.02% sodium azide, pH7.3 with 0.5% bovine serum albumin. Aliquot and store at -20C. Minimize freezing and thawing.
Concentration:	lot specific
Purification:	Purified from goat serum by ammonium sulphate precipitation followed by antigen affinity chromatography using the immunizing peptide.
Conjugation:	Unconjugated
Storage:	Store at -20°C as received.
Stability:	Stable for 12 months from date of receipt.
Gene Name:	protein kinase AMP-activated catalytic subunit alpha 2
Database Link:	NP_006243 Entrez Gene 78975 Rat Entrez Gene 108079 Mouse Entrez Gene 489571 Dog Entrez Gene 5563 Human P54646
Synonyms:	AMPK; AMPK2; AMPKa2; PRKAA
Protein Families:	Druggable Genome, Protein Kinase
Protein Pathways:	Adipocytokine signaling pathway, Hypertrophic cardiomyopathy (HCM), Insulin signaling pathway, mTOR signaling pathway, Regulation of autophagy

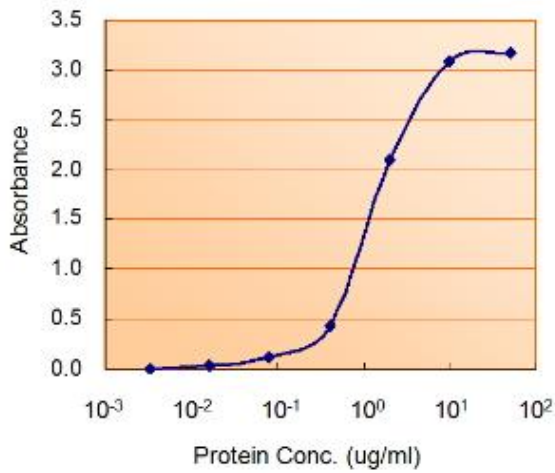


[View online »](#)

Product images:



(1ug/ml) staining of Human Liver lysate (35ug protein in RIPA buffer). Primary incubation was 1 hour. Detected by chemiluminescence.



(1.5ug/ml) as the reporter with a capture rabbit antibody at 2.5ug/ml.