

## Product datasheet for **TA311356**

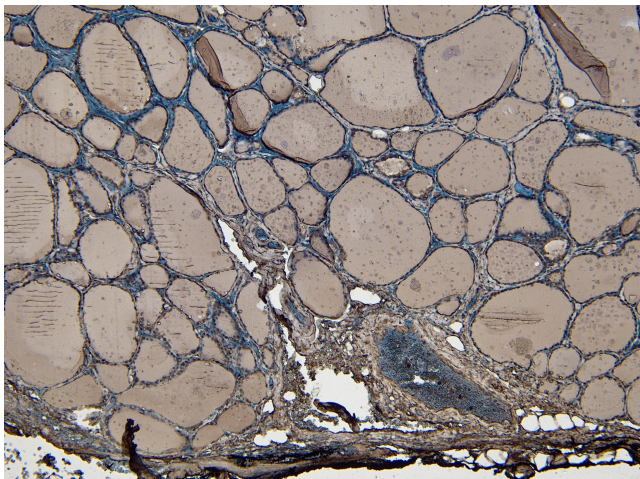
### ENPP1 Goat Polyclonal Antibody

#### Product data:

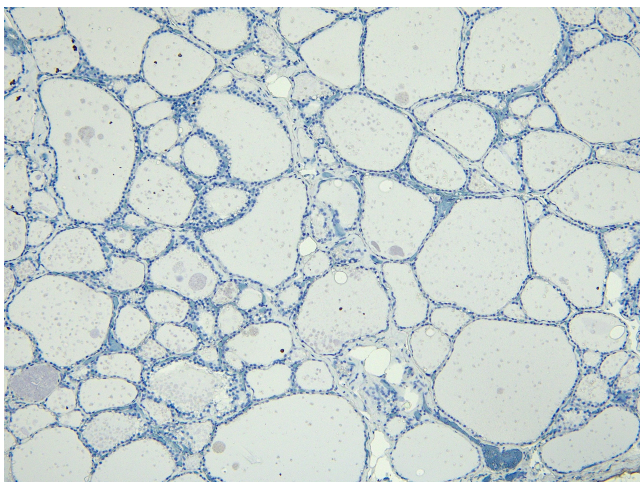
Product Type:	Primary Antibodies
Applications:	IHC, PEP-ELISA
Recommended Dilution:	WB: 1-3ug/ml, IHC: 1-2ug/ml
Reactivity:	Human (Expected from sequence similarity: Mouse, Rat)
Host:	Goat
Clonality:	Polyclonal
Immunogen:	Peptide with sequence C-KTHLPTFSQED, from the C Terminus of the protein sequence according to NP_006199.2.
Formulation:	Supplied at 0.5 mg/ml in Tris saline, 0.02% sodium azide, pH7.3 with 0.5% bovine serum albumin. Aliquot and store at -20C. Minimize freezing and thawing.
Concentration:	lot specific
Purification:	Purified from goat serum by ammonium sulphate precipitation followed by antigen affinity chromatography using the immunizing peptide.
Conjugation:	Unconjugated
Storage:	Store at -20°C as received.
Stability:	Stable for 12 months from date of receipt.
Gene Name:	ectonucleotide pyrophosphatase/phosphodiesterase 1
Database Link:	<a href="#">NP_006199</a> <a href="#">Entrez Gene 18605 Mouse</a> <a href="#">Entrez Gene 85496 Rat</a> <a href="#">Entrez Gene 5167 Human</a> <a href="#">P22413</a>
Synonyms:	ARHR2; COLED; M6S1; NPP1; NPPS; PC-1; PCA1; PDNP1
Protein Families:	Druggable Genome, Transmembrane
Protein Pathways:	Metabolic pathways, Nicotinate and nicotinamide metabolism, Pantothenate and CoA biosynthesis, Purine metabolism, Riboflavin metabolism, Starch and sucrose metabolism



[View online »](#)

**Product images:**

TA311356 (4 $\mu$ g/ml) staining of paraffin embedded Human Thyroid Gland. Heat induced antigen retrieval with citrate buffer Ph 6, HRP-staining.



TA311356 Negative Control showing staining of paraffin embedded Human Thyroid Gland, with no primary antibody.