

Product datasheet for **TA311354**

PAX4 Goat Polyclonal Antibody

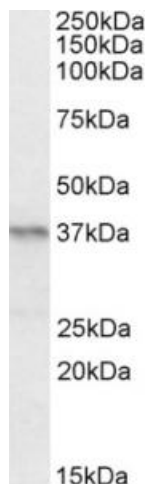
Product data:

Product Type:	Primary Antibodies
Applications:	ELISA, WB
Recommended Dilution:	WB: 0.2-0.6ug/ml, ELISA: 1-2ug/ml
Reactivity:	Human, Mouse (Expected from sequence similarity: Rat, Dog)
Host:	Goat
Clonality:	Polyclonal
Immunogen:	Peptide with sequence C-GKLATATSLPEDTVR, from the internal region of the protein sequence according to NP_006184.2.
Formulation:	Supplied at 0.5 mg/ml in Tris saline, 0.02% sodium azide, pH7.3 with 0.5% bovine serum albumin. Aliquot and store at -20C. Minimize freezing and thawing.
Concentration:	lot specific
Purification:	Purified from goat serum by ammonium sulphate precipitation followed by antigen affinity chromatography using the immunizing peptide.
Conjugation:	Unconjugated
Storage:	Store at -20°C as received.
Stability:	Stable for 12 months from date of receipt.
Gene Name:	paired box 4
Database Link:	NP_006184 Entrez Gene 18506 Mouse Entrez Gene 83630 Rat Entrez Gene 482268 Dog Entrez Gene 5078 Human O43316
Synonyms:	KPD; MODY9
Protein Families:	Embryonic stem cells, ES Cell Differentiation/IPS, Transcription Factors
Protein Pathways:	Maturity onset diabetes of the young

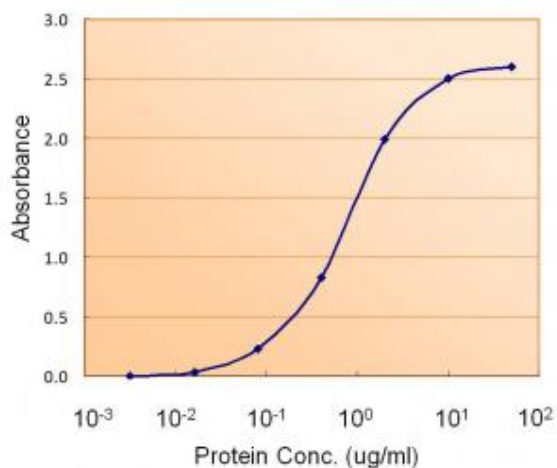


[View online »](#)

Product images:



(0.2ug/ml) staining of Mouse Pancreas lysate (35ug protein in RIPA buffer). Primary incubation was 1 hour. Detected by chemiluminescence.



EB9787 (1.5ug/ml) as the reporter with a capture rabbit antibody at 5ug/ml.