

Product datasheet for **TA311347**

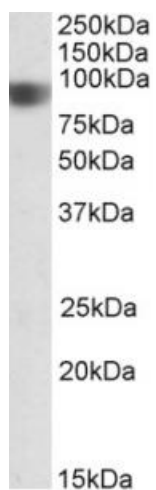
CARD4 (NOD1) Goat Polyclonal Antibody

Product data:

Product Type:	Primary Antibodies
Applications:	WB
Recommended Dilution:	WB: 0.5-1.5ug/ml
Reactivity:	Human (Expected from sequence similarity: Mouse, Rat, Dog, Pig, Cow)
Host:	Goat
Clonality:	Polyclonal
Immunogen:	Peptide with sequence EAKVYEDEKRIICF, from the C Terminus of the protein sequence according to NP_006083.1.
Formulation:	Supplied at 0.5 mg/ml in Tris saline, 0.02% sodium azide, pH7.3 with 0.5% bovine serum albumin. Aliquot and store at -20C. Minimize freezing and thawing.
Concentration:	lot specific
Purification:	Purified from goat serum by ammonium sulphate precipitation followed by antigen affinity chromatography using the immunizing peptide.
Conjugation:	Unconjugated
Storage:	Store at -20°C as received.
Stability:	Stable for 12 months from date of receipt.
Gene Name:	nucleotide binding oligomerization domain containing 1
Database Link:	NP_006083 Entrez Gene 107607 Mouse Entrez Gene 500133 Rat Entrez Gene 482382 Dog Entrez Gene 10392 Human Q9Y239
Synonyms:	CARD4; CLR7.1; NLRC1
Protein Families:	Druggable Genome
Protein Pathways:	Epithelial cell signaling in Helicobacter pylori infection, NOD-like receptor signaling pathway



[View online »](#)

Product images:

(0.5ug/ml) staining of Human Duodenum lysate (35ug protein in RIPA buffer). Primary incubation was 1 hour. Detected by chemiluminescence.