

## Product datasheet for TA311346

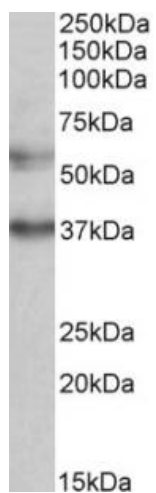
### CBARA1 (MICU1) Goat Polyclonal Antibody

#### Product data:

Product Type:	Primary Antibodies
Applications:	WB
Recommended Dilution:	WB: 0.5-2ug/ml
Reactivity:	Human (Expected from sequence similarity: Mouse, Rat, Dog, Pig, Cow)
Host:	Goat
Clonality:	Polyclonal
Immunogen:	Peptide with sequence C-EYENRIRAYSTPDK, from the internal region of the protein sequence according to NP_006068.2; NP_001182447.1.
Formulation:	Supplied at 0.5 mg/ml in Tris saline, 0.02% sodium azide, pH7.3 with 0.5% bovine serum albumin. Aliquot and store at -20C. Minimize freezing and thawing.
Concentration:	lot specific
Purification:	Purified from goat serum by ammonium sulphate precipitation followed by antigen affinity chromatography using the immunizing peptide.
Conjugation:	Unconjugated
Storage:	Store at -20°C as received.
Stability:	Stable for 12 months from date of receipt.
Gene Name:	mitochondrial calcium uptake 1
Database Link:	<a href="#">NP_006068</a> <a href="#">Entrez Gene 216001 Mouse</a> <a href="#">Entrez Gene 365567 Rat</a> <a href="#">Entrez Gene 479241 Dog</a> <a href="#">Entrez Gene 10367 Human</a> <a href="#">Q9BPX6</a>
Synonyms:	CALC; CBARA1; EFHA3; MPXPS



[View online »](#)

**Product images:**

(0.5ug/ml) staining of K562 lysate (35ug protein in RIPA buffer). Primary incubation was 1 hour. Detected by chemiluminescence.