

Product datasheet for **TA311345**

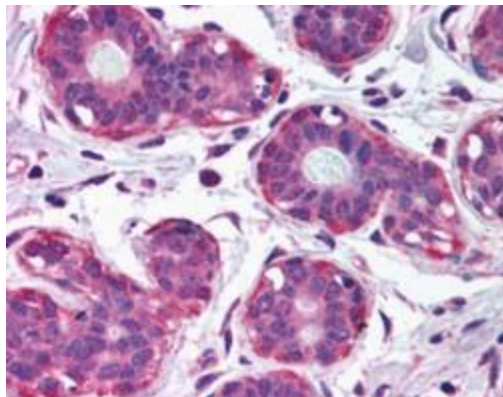
NET1 Goat Polyclonal Antibody

Product data:

Product Type:	Primary Antibodies
Applications:	IHC
Recommended Dilution:	WB: 0.3ug/ml, IHC: 2.5ug/ml
Reactivity:	Human (Expected from sequence similarity: Mouse, Rat, Dog)
Host:	Goat
Clonality:	Polyclonal
Immunogen:	Peptide with sequence C-DKLEYLDEKQRDPP, from the internal region of the protein sequence according to NP_005854.2; NP_001040625.1.
Formulation:	Supplied at 0.5 mg/ml in Tris saline, 0.02% sodium azide, pH7.3 with 0.5% bovine serum albumin. Aliquot and store at -20C. Minimize freezing and thawing.
Concentration:	lot specific
Purification:	Purified from goat serum by ammonium sulphate precipitation followed by antigen affinity chromatography using the immunizing peptide.
Conjugation:	Unconjugated
Storage:	Store at -20°C as received.
Stability:	Stable for 12 months from date of receipt.
Gene Name:	neuroepithelial cell transforming 1
Database Link:	NP_005854 Entrez Gene 56349 Mouse Entrez Gene 307098 Rat Entrez Gene 487147 Dog Entrez Gene 10276 Human Q7Z628
Synonyms:	ARHGEF8; NET1A
Protein Families:	Druggable Genome



[View online »](#)

Product images:

(2.5ug/ml) staining of paraffin embedded Human Breast. Steamed antigen retrieval with citrate buffer pH 6, AP-staining.