

Product datasheet for **TA311340**

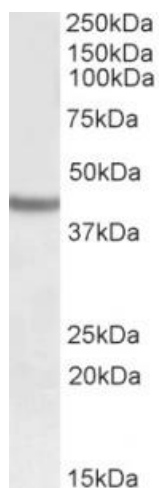
SOX3 Goat Polyclonal Antibody

Product data:

Product Type:	Primary Antibodies
Applications:	WB
Recommended Dilution:	WB: 0.5-1.5ug/ml, IHC: 3-5ug/ml
Reactivity:	Human (Expected from sequence similarity: Mouse, Rat, Dog)
Host:	Goat
Clonality:	Polyclonal
Immunogen:	Peptide with sequence C-DAASPLPGGRLHGVH, from the C Terminus of the protein sequence according to NP_005625.2.
Formulation:	Supplied at 0.5 mg/ml in Tris saline, 0.02% sodium azide, pH7.3 with 0.5% bovine serum albumin. Aliquot and store at -20C. Minimize freezing and thawing.
Concentration:	lot specific
Purification:	Purified from goat serum by ammonium sulphate precipitation followed by antigen affinity chromatography using the immunizing peptide.
Conjugation:	Unconjugated
Storage:	Store at -20°C as received.
Stability:	Stable for 12 months from date of receipt.
Gene Name:	SRY-box 3
Database Link:	NP_005625 Entrez Gene 20675 Mouse Entrez Gene 679158 Rat Entrez Gene 492178 Dog Entrez Gene 6658 Human P41225
Synonyms:	GHDX; MRGH; PHP; PHPX; SOXB



[View online »](#)

Product images:

(0.5ug/ml) staining of Human Cerebral Cortex lysate (35ug protein in RIPA buffer). Primary incubation was 1 hour. Detected by chemiluminescence.