

## Product datasheet for **TA311339**

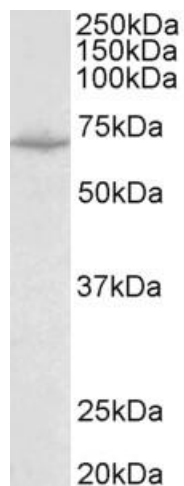
### Slc6a8 Goat Polyclonal Antibody

#### Product data:

Product Type:	Primary Antibodies
Applications:	WB
Recommended Dilution:	WB: 0.1-0.3ug/ml
Reactivity:	Mouse (Expected from sequence similarity: Human, Rat, Dog, Pig, Cow)
Host:	Goat
Clonality:	Polyclonal
Immunogen:	Peptide with sequence ASLANLTCDQLADRR, from the internal region of the protein sequence according to NP_005620.1; NP_001136277.1; NP_001136278.1.
Formulation:	Supplied at 0.5 mg/ml in Tris saline, 0.02% sodium azide, pH7.3 with 0.5% bovine serum albumin. Aliquot and store at -20C. Minimize freezing and thawing.
Concentration:	lot specific
Purification:	Purified from goat serum by ammonium sulphate precipitation followed by antigen affinity chromatography using the immunizing peptide.
Conjugation:	Unconjugated
Storage:	Store at -20°C as received.
Stability:	Stable for 12 months from date of receipt.
Gene Name:	solute carrier family 6 (neurotransmitter transporter, creatine), member 8
Database Link:	<a href="#">NP_598748</a> <a href="#">Entrez Gene 6535 Human</a> <a href="#">Entrez Gene 50690 Rat</a> <a href="#">Entrez Gene 492242 Dog</a> <a href="#">Entrez Gene 102857 Mouse</a> <a href="#">Q8VBW1</a>
Synonyms:	CRT; CRTR; CT1; MGC87396



[View online »](#)

**Product images:**

(0.1ug/ml) staining of Mouse Heart lysate (35ug protein in RIPA buffer). Primary incubation was 1 hour. Detected by chemiluminescence.