

Product datasheet for **TA311337**

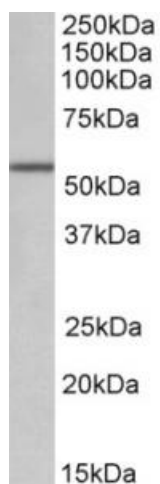
ALDH6A1 Goat Polyclonal Antibody

Product data:

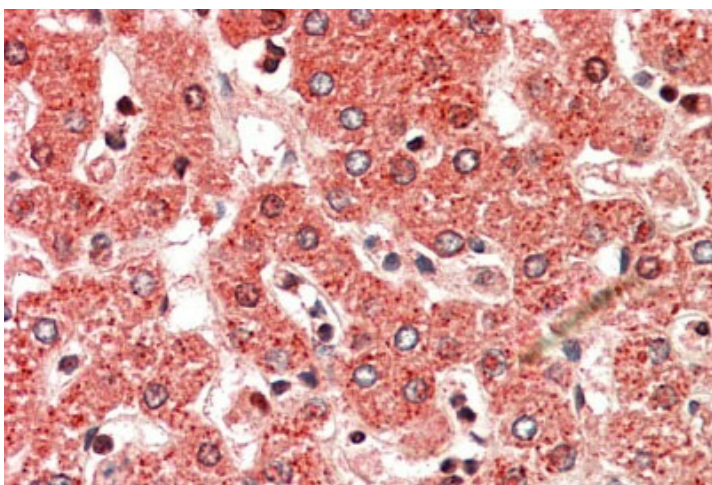
Product Type:	Primary Antibodies
Applications:	IHC, WB
Recommended Dilution:	WB: 0.1-0.3ug/ml, IHC: 5-10ug/mL
Reactivity:	Human, Mouse, Rat (Expected from sequence similarity: Dog, Cow, Pig)
Host:	Goat
Clonality:	Polyclonal
Immunogen:	Peptide with sequence C-SRSSFRGDTN, from the internal region of the protein sequence according to NP_005580.1.
Formulation:	Supplied at 0.5 mg/ml in Tris saline, 0.02% sodium azide, pH7.3 with 0.5% bovine serum albumin. Aliquot and store at -20C. Minimize freezing and thawing.
Concentration:	lot specific
Purification:	Purified from goat serum by ammonium sulphate precipitation followed by antigen affinity chromatography using the immunizing peptide.
Conjugation:	Unconjugated
Storage:	Store at -20°C as received.
Stability:	Stable for 12 months from date of receipt.
Gene Name:	aldehyde dehydrogenase 6 family member A1
Database Link:	NP_005580 Entrez Gene 81708 Rat Entrez Gene 104776 Mouse Entrez Gene 490779 Dog Entrez Gene 4329 Human Q02252
Synonyms:	MMSADHA; MMSDH
Protein Families:	Druggable Genome, Transmembrane
Protein Pathways:	Inositol phosphate metabolism, Metabolic pathways, Propanoate metabolism, Valine, leucine and isoleucine degradation



[View online »](#)

Product images:

(0.1 ug/ml) staining of Mouse Kidney lysate (35ug protein in RIPA buffer). Primary incubation was 1 hour. Detected by chemiluminescence.



Anti-ALDH6A1 antibody (5ug/ml) staining of paraffin embedded Human Liver. Steamed antigen retrieval with citrate buffer pH 6, AP-staining.