

## Product datasheet for **TA311334**

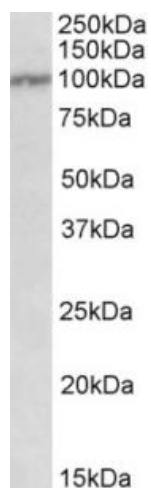
### IL12RB1 Goat Polyclonal Antibody

#### Product data:

Product Type:	Primary Antibodies
Applications:	WB
Recommended Dilution:	WB: 0.3-1ug/ml
Reactivity:	Human
Host:	Goat
Clonality:	Polyclonal
Immunogen:	Peptide with sequence C-HVSVKNHSLDSVS, from the Internal region of the protein sequence according to NP_005526.1.
Formulation:	Supplied at 0.5 mg/ml in Tris saline, 0.02% sodium azide, pH7.3 with 0.5% bovine serum albumin. Aliquot and store at -20C. Minimize freezing and thawing.
Concentration:	lot specific
Purification:	Purified from goat serum by ammonium sulphate precipitation followed by antigen affinity chromatography using the immunizing peptide.
Conjugation:	Unconjugated
Storage:	Store at -20°C as received.
Stability:	Stable for 12 months from date of receipt.
Gene Name:	interleukin 12 receptor subunit beta 1
Database Link:	<a href="#">NP_005526</a> <a href="#">Entrez Gene 3594 Human P42701</a>
Synonyms:	CD212; IL-12R-BETA1; IL12RB; IMD30
Protein Families:	Druggable Genome, Transmembrane
Protein Pathways:	Cytokine-cytokine receptor interaction, Jak-STAT signaling pathway



[View online »](#)

**Product images:**

(0.3ug/ml) staining of Peripheral Blood Lymphocytes lysate (35ug protein in RIPA buffer). Primary incubation was 1 hour. Detected by chemiluminescence.