

Product datasheet for **TA311331**

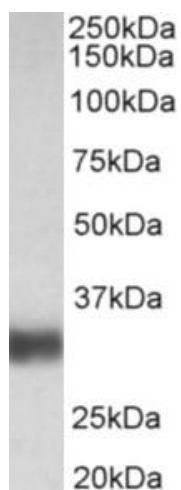
SFTPA1 Goat Polyclonal Antibody

Product data:

Product Type:	Primary Antibodies
Applications:	WB
Recommended Dilution:	WB: 0.01-0.03ug/ml
Reactivity:	Human (Expected from sequence similarity: Cow)
Host:	Goat
Clonality:	Polyclonal
Immunogen:	Peptide with sequence C-HLDEELQATLHDFR, from the internal region of the protein sequence according to NP_005402.3; NP_001087239.2; NP_001158117.1; NP_001158118.1; NP_001092138.1.
Formulation:	Supplied at 0.5 mg/ml in Tris saline, 0.02% sodium azide, pH7.3 with 0.5% bovine serum albumin. Aliquot and store at -20C. Minimize freezing and thawing.
Concentration:	lot specific
Purification:	Purified from goat serum by ammonium sulphate precipitation followed by antigen affinity chromatography using the immunizing peptide.
Conjugation:	Unconjugated
Storage:	Store at -20°C as received.
Stability:	Stable for 12 months from date of receipt.
Gene Name:	surfactant protein A1
Database Link:	NP_005402 Entrez Gene 653509 Human Q8IWL2
Synonyms:	COLEC4; PSAP; PSP-A; PSPA; SFTP1; SFTPA1B; SP-A; SP-A1; SPA; SPA1



[View online »](#)

Product images:

(0.01ug/ml) staining of Human Lung lysate (35ug protein in RIPA buffer). Primary incubation was 1 hour. Detected by chemiluminescence.