

## Product datasheet for **TA311330**

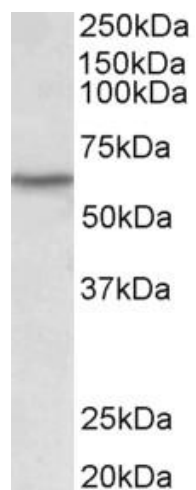
### LCK Goat Polyclonal Antibody

#### Product data:

Product Type:	Primary Antibodies
Applications:	WB
Recommended Dilution:	WB: 0.1-0.3ug/ml
Reactivity:	Human (Expected from sequence similarity: Mouse, Rat, Dog, Pig, Cow)
Host:	Goat
Clonality:	Polyclonal
Immunogen:	Peptide with sequence C-RNGSEVRDPLVTYE, from the internal region (near N Terminus) of the protein sequence according to NP_005347.3.
Formulation:	Supplied at 0.5 mg/ml in Tris saline, 0.02% sodium azide, pH7.3 with 0.5% bovine serum albumin. Aliquot and store at -20C. Minimize freezing and thawing.
Concentration:	lot specific
Purification:	Purified from goat serum by ammonium sulphate precipitation followed by antigen affinity chromatography using the immunizing peptide.
Conjugation:	Unconjugated
Storage:	Store at -20°C as received.
Stability:	Stable for 12 months from date of receipt.
Gene Name:	LCK proto-oncogene, Src family tyrosine kinase
Database Link:	<a href="#">NP_005347</a> <a href="#">Entrez Gene 16818 Mouse</a> <a href="#">Entrez Gene 313050 Rat</a> <a href="#">Entrez Gene 478151 Dog</a> <a href="#">Entrez Gene 3932 Human</a> <a href="#">P06239</a>
Synonyms:	IMD22; LSK; p56lck; pp58lck; YT16
Protein Families:	Druggable Genome, Protein Kinase, Stem cell - Pluripotency
Protein Pathways:	Natural killer cell mediated cytotoxicity, Primary immunodeficiency, T cell receptor signaling pathway



[View online »](#)

**Product images:**

(0.1 ug/ml) staining of Human Thymus lysate (35ug protein in RIPA buffer). Primary incubation was 1 hour. Detected by chemiluminescence.