

## Product datasheet for **TA311329**

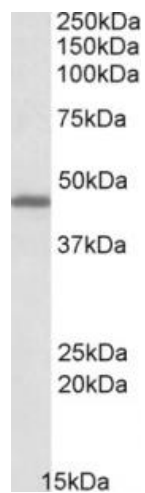
### GPR17 Goat Polyclonal Antibody

#### Product data:

Product Type:	Primary Antibodies
Applications:	WB
Recommended Dilution:	WB: 0.1-0.3ug/ml
Reactivity:	Human, Mouse, Rat (Expected from sequence similarity: Cow)
Host:	Goat
Clonality:	Polyclonal
Immunogen:	Peptide with sequence C-EGKTNESSLSAKSE, from the C Terminus of the protein sequence according to NP_005282.1.
Formulation:	Supplied at 0.5 mg/ml in Tris saline, 0.02% sodium azide, pH7.3 with 0.5% bovine serum albumin. Aliquot and store at -20C. Minimize freezing and thawing.
Concentration:	lot specific
Purification:	Purified from goat serum by ammonium sulphate precipitation followed by antigen affinity chromatography using the immunizing peptide.
Conjugation:	Unconjugated
Storage:	Store at -20°C as received.
Stability:	Stable for 12 months from date of receipt.
Gene Name:	G protein-coupled receptor 17
Database Link:	<a href="#">NP_005282</a> <a href="#">Entrez Gene 574402 Mouse</a> <a href="#">Entrez Gene 767613 Rat</a> <a href="#">Entrez Gene 2840 Human Q13304</a>
Synonyms:	DKFZp686M18273
Protein Families:	Druggable Genome, GPCR, Transmembrane



[View online »](#)

**Product images:**

(0.1ug/ml) staining of Human Cerebellum lysate (35ug protein in RIPA buffer). Primary incubation was 1 hour. Detected by chemiluminescence.