

Product datasheet for **TA311328**

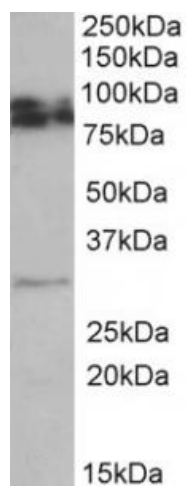
Neuronal membrane glycoprotein M6 a (GPM6A) Goat Polyclonal Antibody

Product data:

Product Type:	Primary Antibodies
Applications:	WB
Recommended Dilution:	WB: 0.5-2ug/ml
Reactivity:	Human, Mouse, Rat (Expected from sequence similarity: Dog)
Host:	Goat
Clonality:	Polyclonal
Immunogen:	Peptide with sequence C-QTYFEMARTAGD, from the internal region of the protein sequence according to NP_005268.1; NP_963885.1; NP_963886.1.
Formulation:	Supplied at 0.5 mg/ml in Tris saline, 0.02% sodium azide, pH7.3 with 0.5% bovine serum albumin. Aliquot and store at -20C. Minimize freezing and thawing.
Concentration:	lot specific
Purification:	Purified from goat serum by ammonium sulphate precipitation followed by antigen affinity chromatography using the immunizing peptide.
Conjugation:	Unconjugated
Storage:	Store at -20°C as received.
Stability:	Stable for 12 months from date of receipt.
Gene Name:	glycoprotein M6A
Database Link:	NP_005268 Entrez Gene 234267 MouseEntrez Gene 306439 RatEntrez Gene 475641 DogEntrez Gene 2823 Human P51674
Synonyms:	GPM6; M6A
Protein Families:	Transmembrane



[View online »](#)

Product images:

(0.5ug/ml) staining of Rat Brain lysate (35ug protein in RIPA buffer). Primary incubation was 1 hour. Detected by chemiluminescence.