

Product datasheet for **TA311327**

GEM Goat Polyclonal Antibody

Product data:

Product Type:	Primary Antibodies
Applications:	WB
Recommended Dilution:	WB: 1-3ug/ml
Reactivity:	Human
Host:	Goat
Clonality:	Polyclonal
Immunogen:	Peptide with sequence C-QKEPHQYSHRNRH, from the internal region of the protein sequence according to NP_005252.1.
Formulation:	Supplied at 0.5 mg/ml in Tris saline, 0.02% sodium azide, pH7.3 with 0.5% bovine serum albumin. Aliquot and store at -20C. Minimize freezing and thawing.
Concentration:	lot specific
Purification:	Purified from goat serum by ammonium sulphate precipitation followed by antigen affinity chromatography using the immunizing peptide.
Conjugation:	Unconjugated
Storage:	Store at -20°C as received.
Stability:	Stable for 12 months from date of receipt.
Gene Name:	GTP binding protein overexpressed in skeletal muscle
Database Link:	NP_005252 Entrez Gene 2669 Human P55040
Synonyms:	KIR
Protein Families:	Druggable Genome

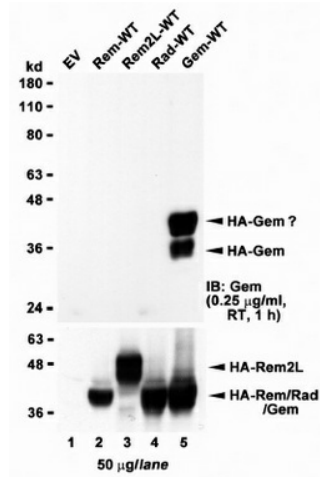


[View online »](#)

Product images:



(1ug/ml) staining of Human Spleen lysate (35ug protein in RIPA buffer). Primary incubation was 1 hour. Detected by chemiluminescence.



HEK293 lysate overexpressing full-length Human GEM (HA tagged), mock-transfected HEK293 (EV) and HEK293 transiently expressing GEM-related genes (Rem, Rem2L and Rad) probed with TA311327 (1ug/ml). The same lysates probed with anti-HA tag antibody in the lower panel.