

## Product datasheet for **TA311325**

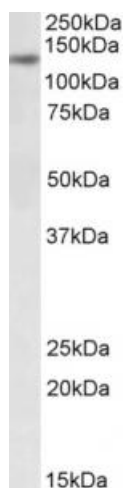
### DIAPH1 Goat Polyclonal Antibody

#### Product data:

Product Type:	Primary Antibodies
Applications:	WB
Recommended Dilution:	WB: 0.3-1ug/ml
Reactivity:	Mouse (Expected from sequence similarity: Human)
Host:	Goat
Clonality:	Polyclonal
Immunogen:	Peptide with sequence C-QTKTSKAKKDQ, from the internal region of the protein sequence according to NP_005210.3; NP_001073280.1.
Formulation:	Supplied at 0.5 mg/ml in Tris saline, 0.02% sodium azide, pH7.3 with 0.5% bovine serum albumin. Aliquot and store at -20C. Minimize freezing and thawing.
Concentration:	lot specific
Purification:	Purified from goat serum by ammonium sulphate precipitation followed by antigen affinity chromatography using the immunizing peptide.
Conjugation:	Unconjugated
Storage:	Store at -20°C as received.
Stability:	Stable for 12 months from date of receipt.
Gene Name:	diaphanous related formin 1
Database Link:	<a href="#">NP_005210</a> <a href="#">Entrez Gene 13367 Mouse</a> <a href="#">Entrez Gene 1729 Human</a> <a href="#">O60610</a>
Synonyms:	DFNA1; DIA1; DRF1; hDIA1; LFHL1; SCBMS
Protein Families:	Druggable Genome, Stem cell - Pluripotency
Protein Pathways:	Focal adhesion, Regulation of actin cytoskeleton



[View online »](#)

**Product images:**

(0.3ug/ml) staining of NIH3T3 lysate (35ug protein in RIPA buffer). Primary incubation was 1 hour. Detected by chemiluminescence.