

Product datasheet for **TA311322**

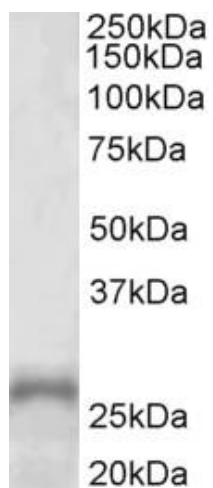
PHOX2A Goat Polyclonal Antibody

Product data:

Product Type:	Primary Antibodies
Applications:	WB
Recommended Dilution:	WB: 1-3ug/ml
Reactivity:	Human (Expected from sequence similarity: Dog, Pig, Cow)
Host:	Goat
Clonality:	Polyclonal
Immunogen:	Peptide with sequence KGEARCSSEDDDSKE, from the internal region of the protein sequence according to NP_005160.2.
Formulation:	Supplied at 0.5 mg/ml in Tris saline, 0.02% sodium azide, pH7.3 with 0.5% bovine serum albumin. Aliquot and store at -20C. Minimize freezing and thawing.
Concentration:	lot specific
Purification:	Purified from goat serum by ammonium sulphate precipitation followed by antigen affinity chromatography using the immunizing peptide.
Conjugation:	Unconjugated
Storage:	Store at -20°C as received.
Stability:	Stable for 12 months from date of receipt.
Gene Name:	paired like homeobox 2a
Database Link:	NP_005160 Entrez Gene 485208 Dog Entrez Gene 401 Human O14813
Synonyms:	ARIX; CFEOM2; FEOM2; NCAM2; PMX2A
Protein Families:	Transcription Factors



[View online »](#)

Product images:

(1ug/ml) staining of Human Adrenal Gland lysate (35ug protein in RIPA buffer). Primary incubation was 1 hour. Detected by chemiluminescence.