

## Product datasheet for **TA311318**

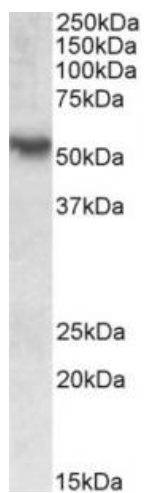
### ROR gamma (RORC) Goat Polyclonal Antibody

#### Product data:

Product Type:	Primary Antibodies
Applications:	WB
Recommended Dilution:	WB: 0.1-0.3ug/ml
Reactivity:	Human (Expected from sequence similarity: Mouse, Dog, Cow)
Host:	Goat
Clonality:	Polyclonal
Immunogen:	Peptide with sequence CHLEYSPEKAE, from the internal region of the protein sequence according to NP_005051.2; NP_001001523.1.
Formulation:	Supplied at 0.5 mg/ml in Tris saline, 0.02% sodium azide, pH7.3 with 0.5% bovine serum albumin. Aliquot and store at -20C. Minimize freezing and thawing.
Concentration:	lot specific
Purification:	Purified from goat serum by ammonium sulphate precipitation followed by antigen affinity chromatography using the immunizing peptide.
Conjugation:	Unconjugated
Storage:	Store at -20°C as received.
Stability:	Stable for 12 months from date of receipt.
Gene Name:	RAR related orphan receptor C
Database Link:	<a href="#">NP_005051</a> <a href="#">Entrez Gene 19885 Mouse</a> <a href="#">Entrez Gene 483205 Dog</a> <a href="#">Entrez Gene 6097 Human</a> <a href="#">P51449</a>
Synonyms:	NR1F3; RORG; RZR-GAMMA; RZRG; TOR
Protein Families:	Druggable Genome, Transcription Factors



[View online »](#)

**Product images:**

(0.1ug/ml) staining of Human Colon lysate (35ug protein in RIPA buffer). Primary incubation was 1 hour. Detected by chemiluminescence.