

Product datasheet for **TA311315**

Calbindin (CALB1) Goat Polyclonal Antibody

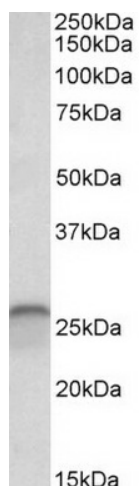
Product data:

Product Type:	Primary Antibodies
Applications:	WB
Recommended Dilution:	WB: 0.03-0.1 µg/ml.
Reactivity:	Human, Mouse, Rat (Expected from sequence similarity: Dog, Pig, Cow)
Host:	Goat
Clonality:	Polyclonal
Immunogen:	Peptide with sequence C-KTFVDQYGRDDGK, from the internal region of the protein sequence according to NP_004920.1.
Formulation:	Supplied at 0.5 mg/ml in Tris saline, 0.02% sodium azide, pH7.3 with 0.5% bovine serum albumin. Aliquot and store at -20C. Minimize freezing and thawing.
Concentration:	lot specific
Purification:	Purified from goat serum by ammonium sulphate precipitation followed by antigen affinity chromatography using the immunizing peptide.
Conjugation:	Unconjugated
Storage:	Store at -20°C as received.
Stability:	Stable for 12 months from date of receipt.
Gene Name:	calbindin 1
Database Link:	NP_004920 Entrez Gene 12307 Mouse Entrez Gene 83839 Rat Entrez Gene 611334 Dog Entrez Gene 793 Human P05937
Synonyms:	CALB; D-28K

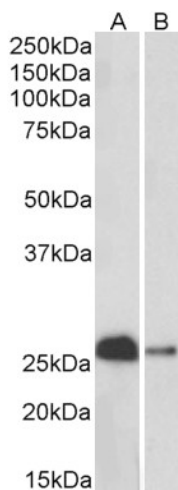


[View online »](#)

Product images:



TA311315 (0.03 ug/ml) staining of Human Cerebellum lysate (35 ug protein in RIPA buffer). Primary incubation was 1 hour. Detected by chemiluminescence.



TA311315 (0.1 ug/ml) staining of Mouse (A) and Rat (B) Brain lysates (35 ug protein in RIPA buffer). Primary incubation was 1 hour. Detected by chemiluminescence.