

## Product datasheet for **TA311313**

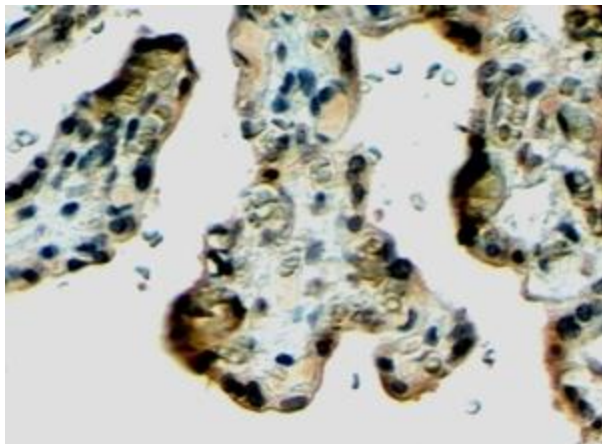
### **Klotho (KL) Goat Polyclonal Antibody**

#### **Product data:**

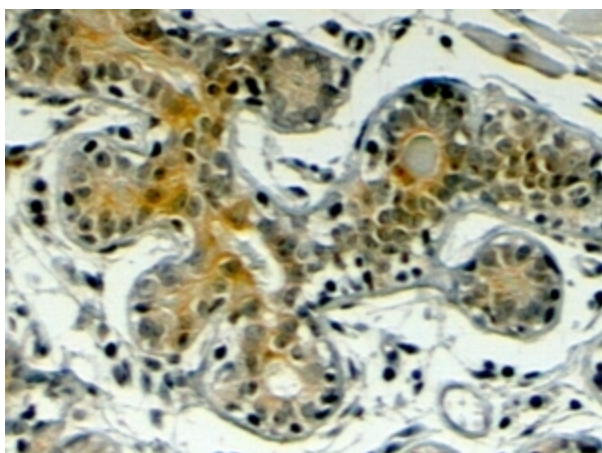
<b>Product Type:</b>	Primary Antibodies
<b>Applications:</b>	IHC
<b>Recommended Dilution:</b>	WB: 1ug/ml, IHC: 4-6ug/ml
<b>Reactivity:</b>	Human (Expected from sequence similarity: Mouse, Rat)
<b>Host:</b>	Goat
<b>Clonality:</b>	Polyclonal
<b>Immunogen:</b>	Peptide with sequence C-KRDDAKYMYLKK, from the internal region of the protein sequence according to NP_004786.2; NP_710150.1.
<b>Formulation:</b>	Supplied at 0.5 mg/ml in Tris saline, 0.02% sodium azide, pH7.3 with 0.5% bovine serum albumin. Aliquot and store at -20C. Minimize freezing and thawing.
<b>Concentration:</b>	lot specific
<b>Purification:</b>	Purified from goat serum by ammonium sulphate precipitation followed by antigen affinity chromatography using the immunizing peptide.
<b>Conjugation:</b>	Unconjugated
<b>Storage:</b>	Store at -20°C as received.
<b>Stability:</b>	Stable for 12 months from date of receipt.
<b>Gene Name:</b>	klotho
<b>Database Link:</b>	<a href="#">NP_004786</a> <a href="#">Entrez Gene 16591 Mouse</a> <a href="#">Entrez Gene 83504 Rat</a> <a href="#">Entrez Gene 9365 Human</a> <a href="#">Q9UEF7</a>
<b>Synonyms:</b>	klotho; OTTHUMP00000018796
<b>Protein Families:</b>	Secreted Protein, Transmembrane



[View online »](#)

**Product images:**

(4ug/ml) staining of paraffin embedded Human Placenta. Steamed antigen retrieval with citrate buffer pH 6, HRP-staining.



(4ug/ml) staining of paraffin embedded Human Breast. Steamed antigen retrieval with citrate buffer pH 6, HRP-staining.